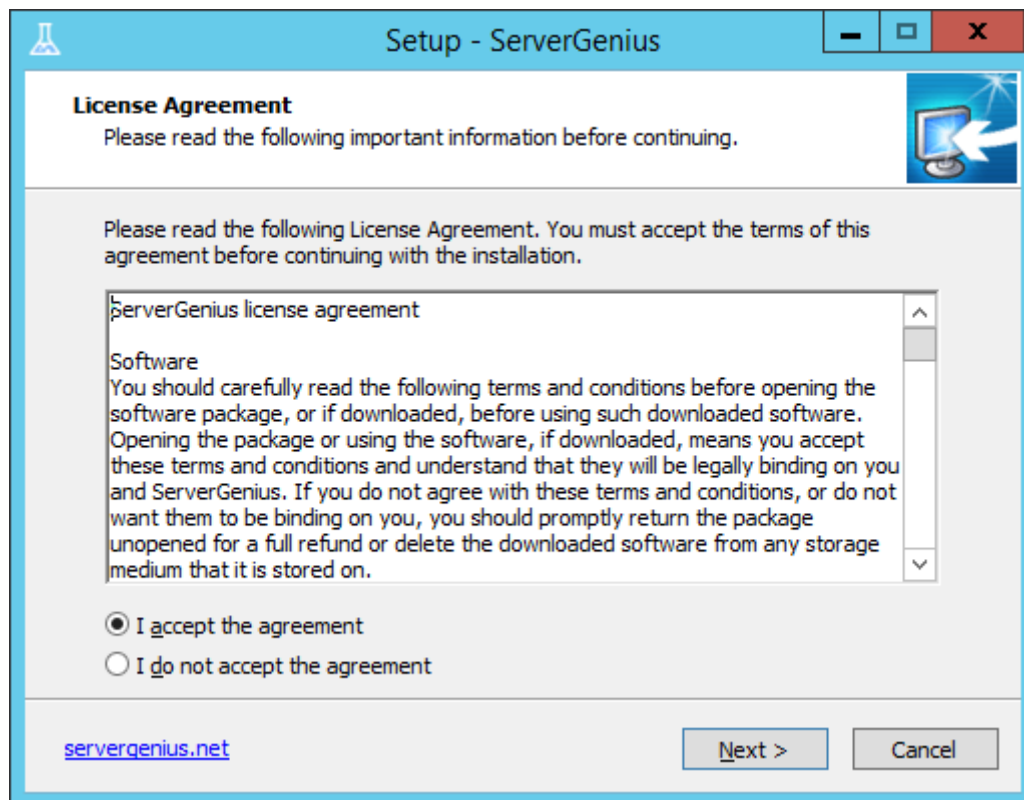


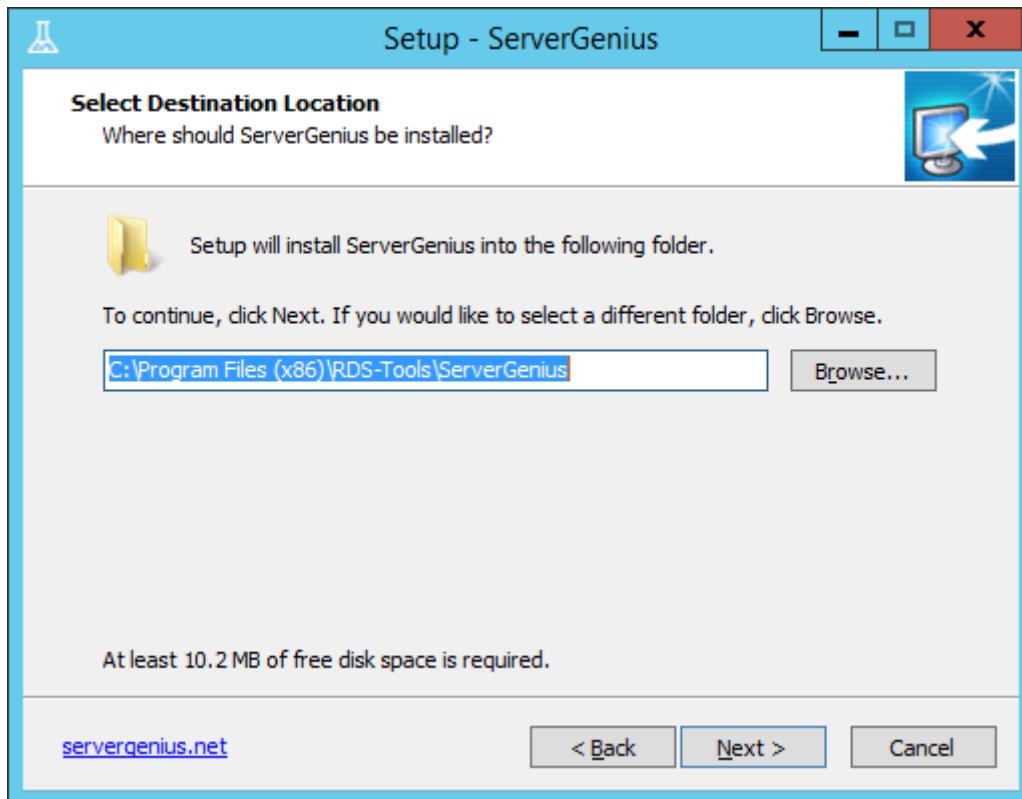
Installation

Run ServerGenius Setup program and then **follow the installation steps**.

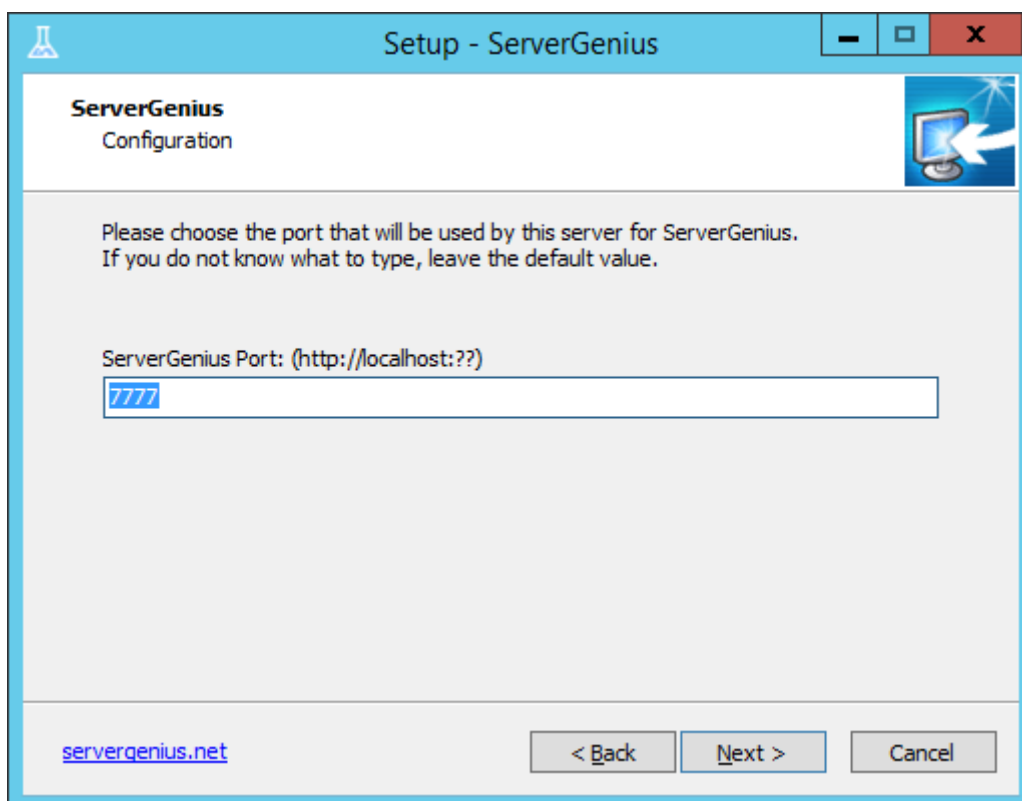
Please note that you must run this Setup as an Administrator, but don't worry, Windows will automatically require it.



Click on "Next" if you agree to the license.



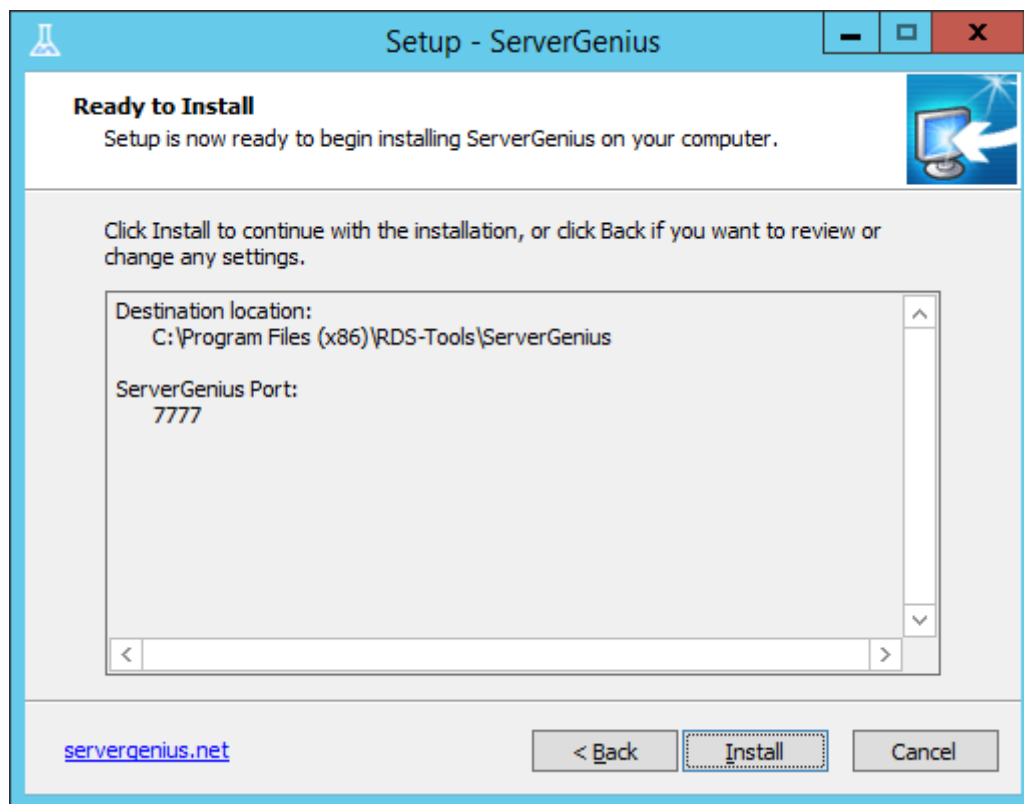
Choose where to install ServerGenius on your computer (we recommend to use the default path).



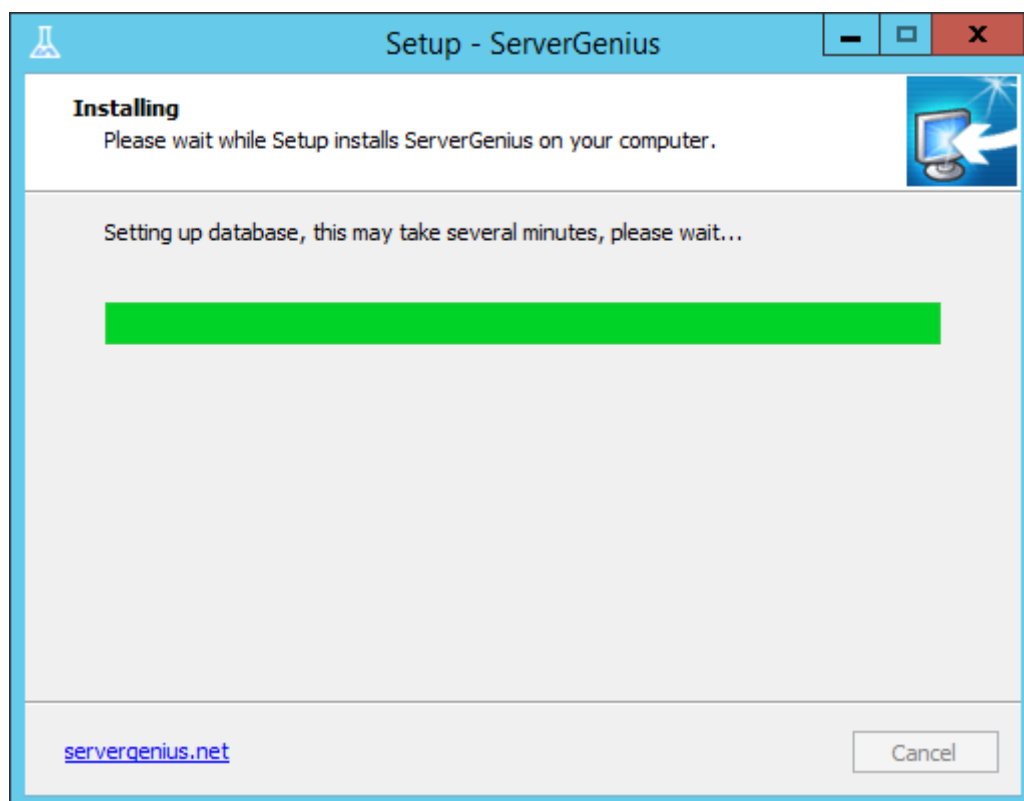
Choose the port on which ServerGenius will publish its web interface.

This is the network port on which you will browse to see ServerGenius reports, alerts, administration panel, etc.

If you do not know what to enter, we recommend you to use the default port. You can change it after the installation if you need to.

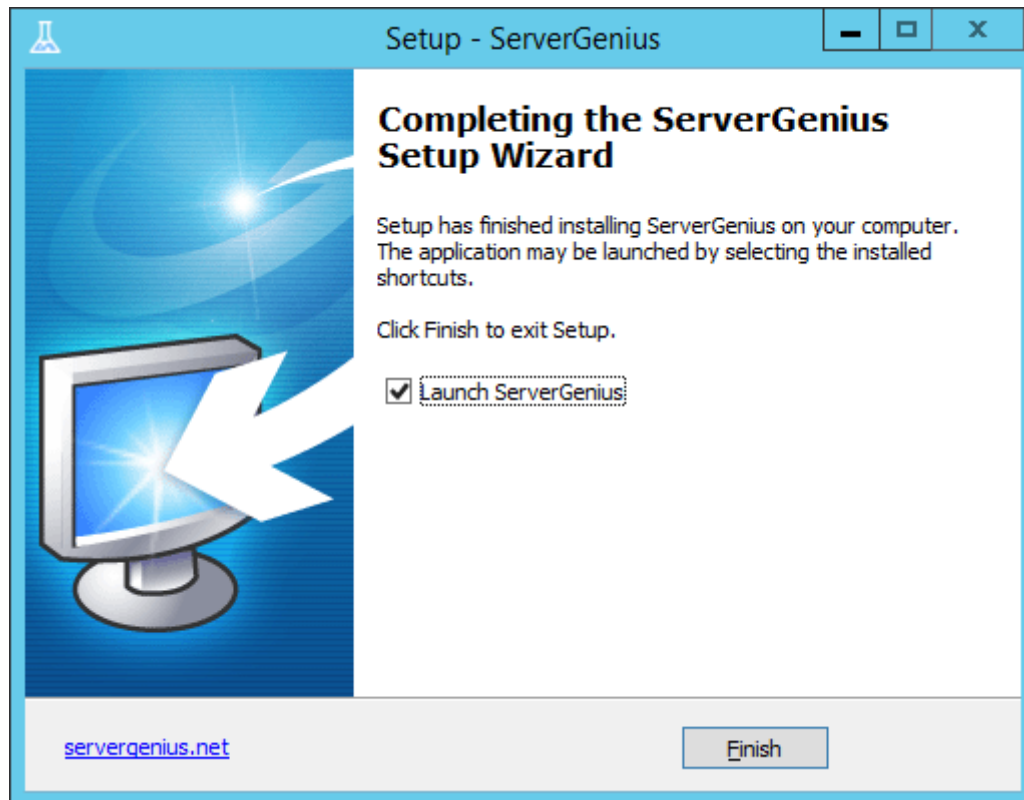


The Setup is now ready to install ServerGenius on your computer. Click on "Install" to start the actual installation.



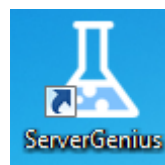
A progress bar is displayed and allows you to follow the installation progress.

Please be patient, as it can sometimes take up to a few minutes to fully install the software.

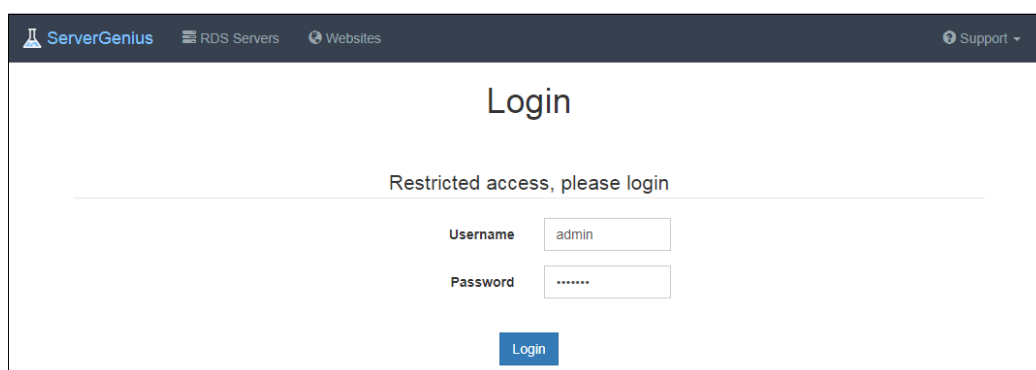


The installation is now finished and ServerGenius is already running in the background on your server.

You can now start using ServerGenius by double-clicking on its icon on your Windows desktop:



or by opening your browser and browsing to ServerGenius address (<http://localhost:7777> by default):



The free trial version is fully featured for 2 weeks.