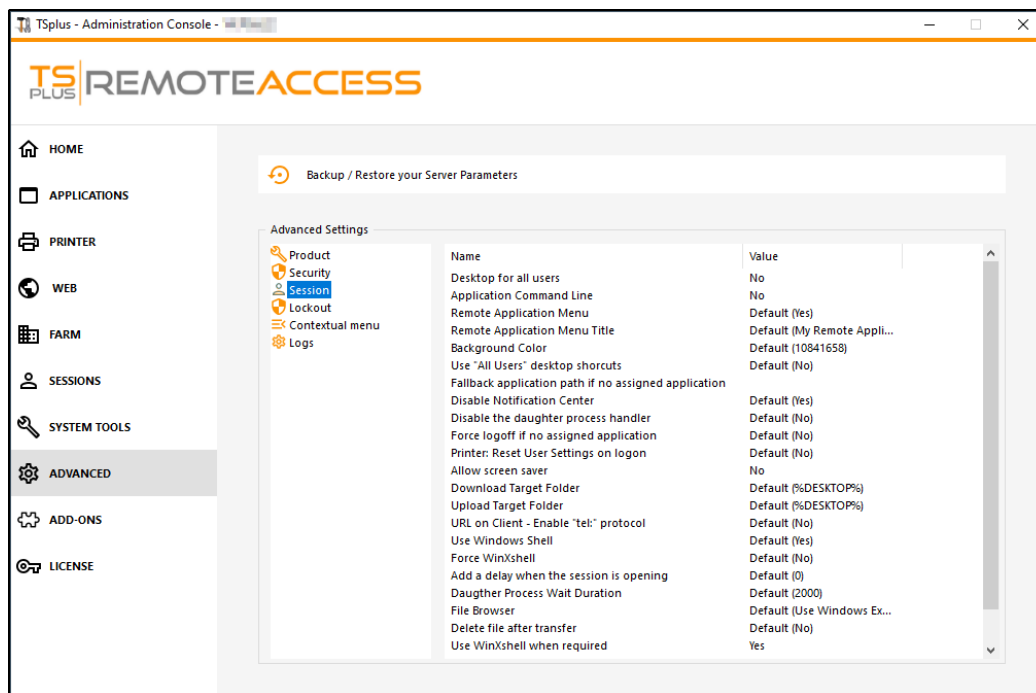


Advanced Features - Session

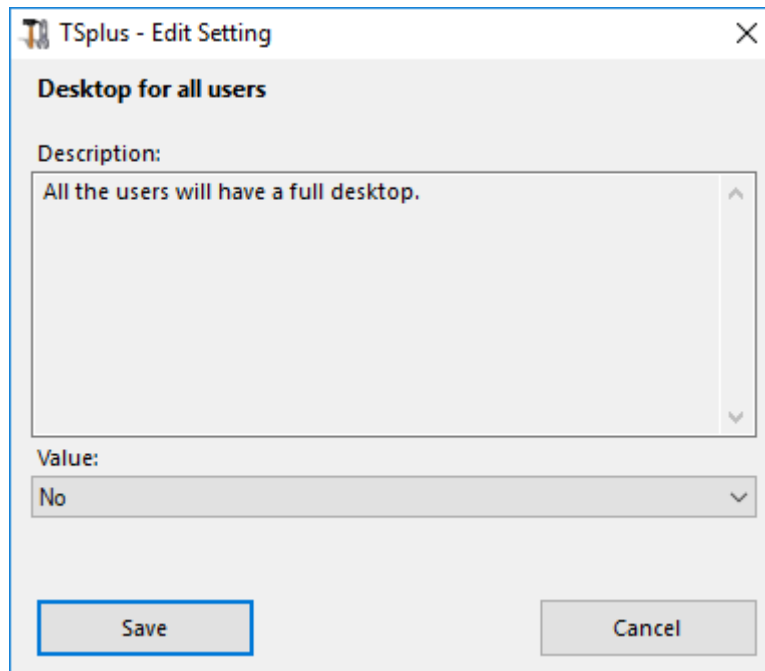
Overview

This section of the Advanced tab allows you to configure user rights and aspects on their sessions.



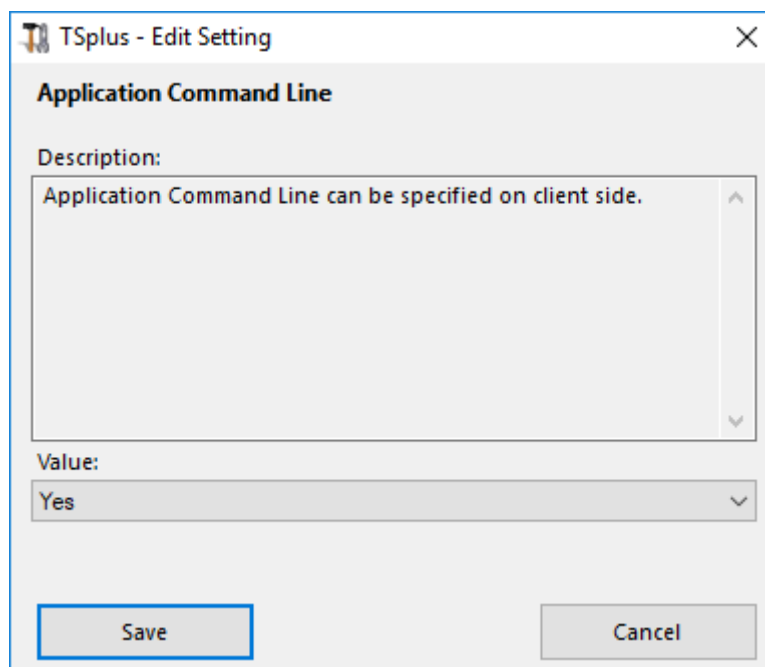
Desktop for all users

Enable a full Desktop for all users by selecting the "Yes" value on this window, then click on save:



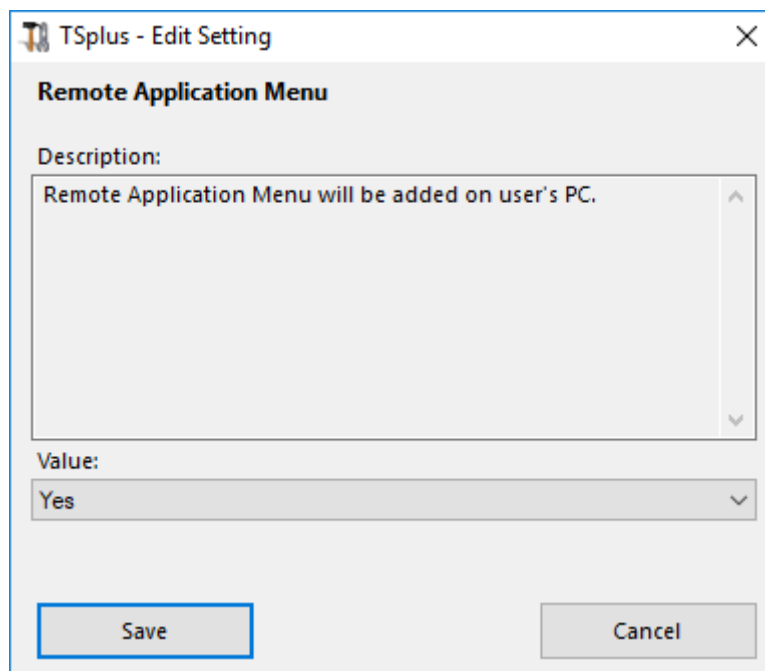
Application Command Line

Application Command Line can be specified on client side. This feature is enabled by default. If you wish to disable it, select the "No" value on this window, then click on save:



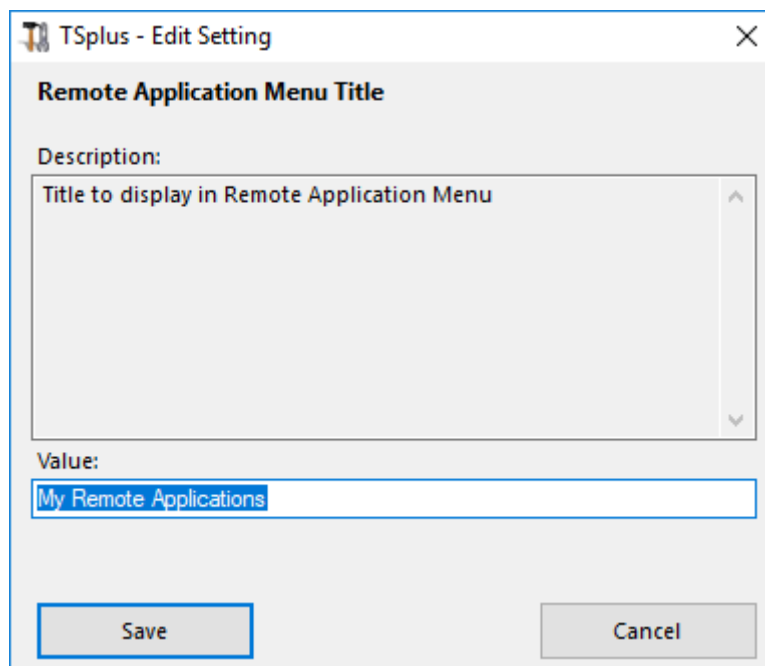
Remote Application Menu

Remote Application Menu will be added on user's PC. This feature is enabled by default. If you wish to disable it, select the "No" value on this window, then click on save:



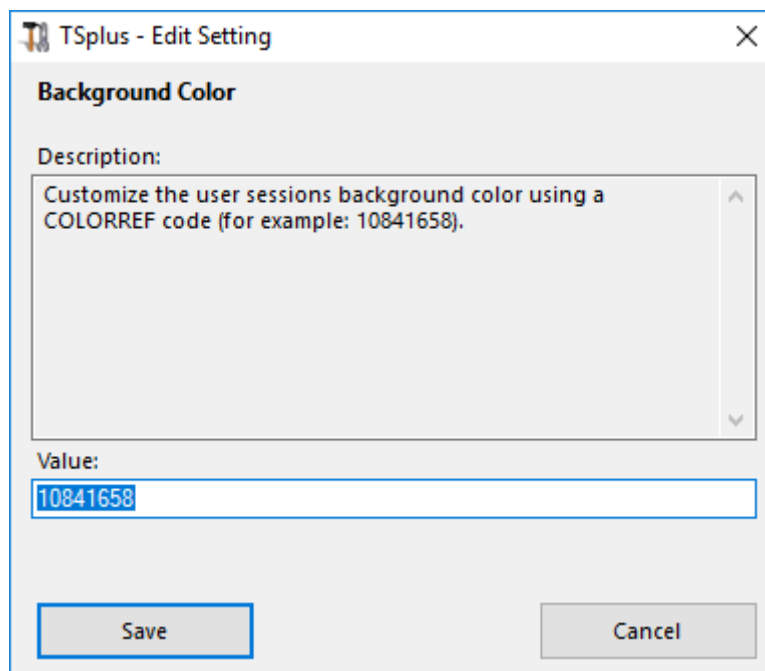
Remote Application Menu Title

You can modify the title of the Remote Application Menu. The default one is "My Remote Applications". If you wish to modify it, enter the desired title, then click on save:



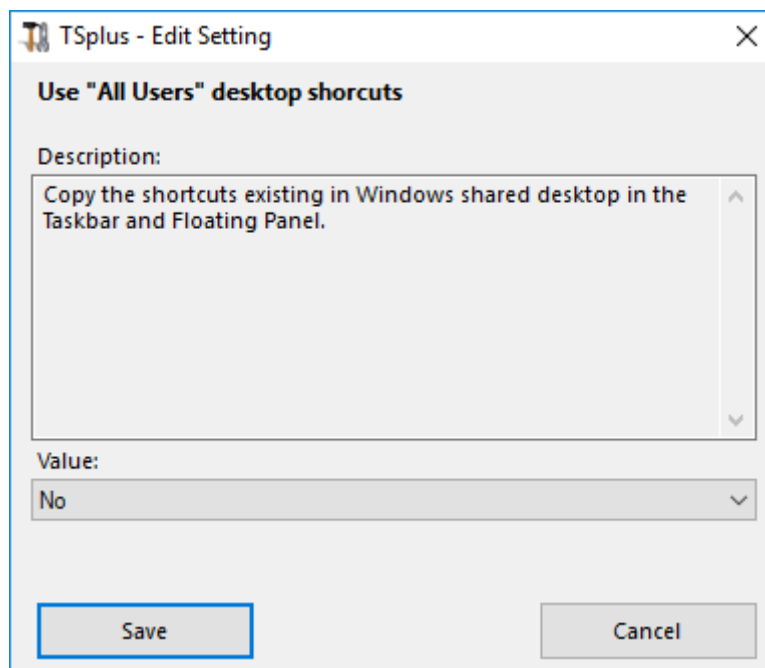
Background color

Customize the user sessions background color using a COLORREF code (for example, the default one is: 10841658).



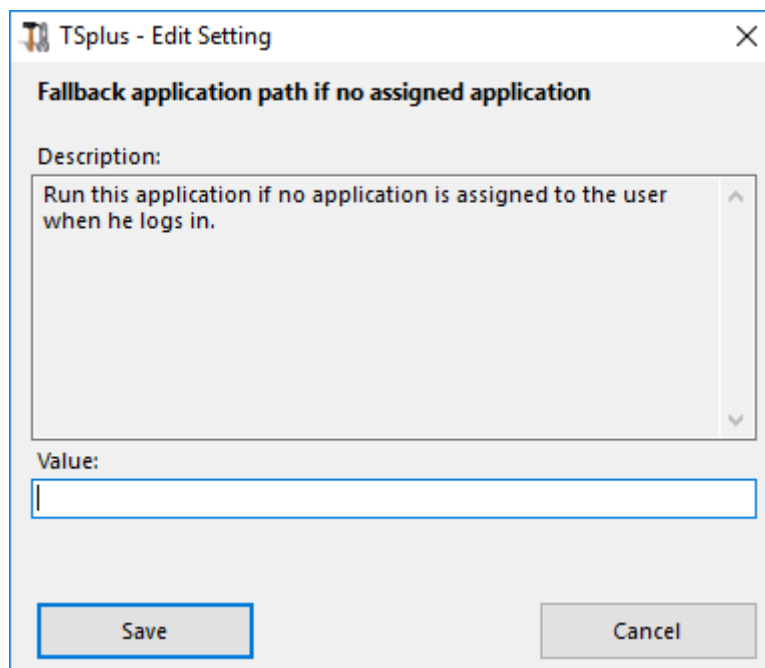
Use "All Users" desktop shortcuts

Copy the shortcuts existing in Windows shared desktop in the Taskbar and Floating Panel. Enable this feature by selecting the "Yes" value on this window, then click on save:



Fallback application path if no assigned application

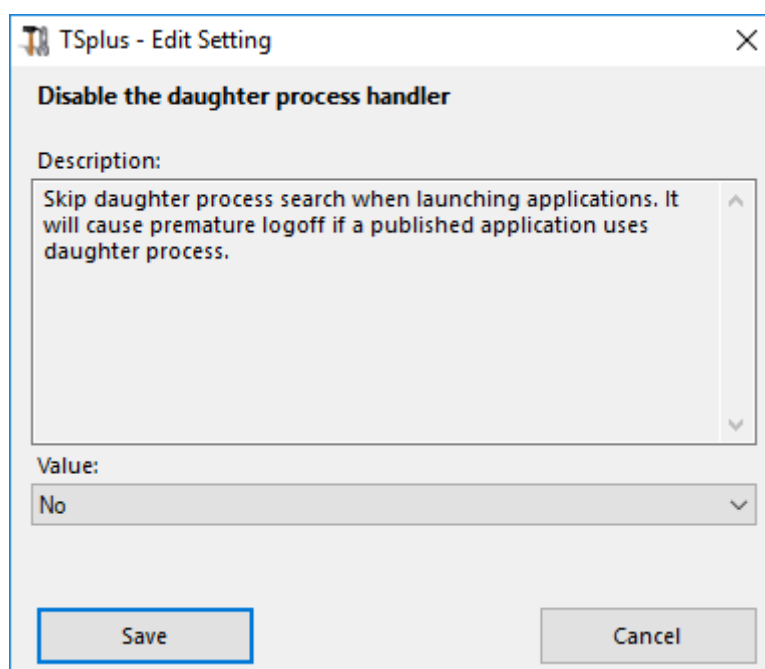
Run this application if no application is assigned to the user when he logs in. There is no value by default. Enable this feature by entering a "Yes" value on this window, then click on save:



The screenshot shows a dialog box titled "TSplus - Edit Setting". The main heading is "Fallback application path if no assigned application". Below this, there is a "Description:" label followed by a text area containing the text: "Run this application if no application is assigned to the user when he logs in." Below the text area is a "Value:" label followed by an empty text input field. At the bottom of the dialog, there are two buttons: "Save" and "Cancel".

Disable the daughter process handler

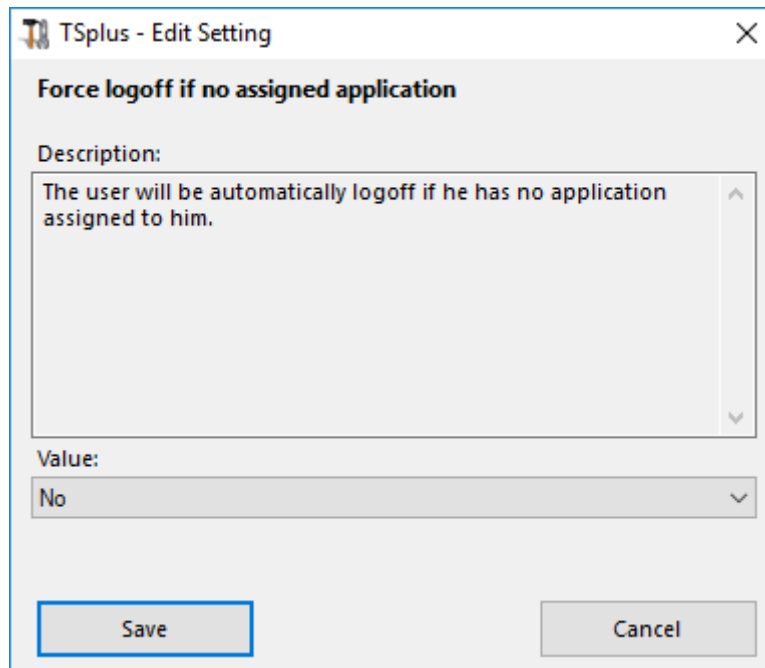
Skip daughter process search when launching applications. It will cause premature logoff if a published application uses daughter process. This feature is disabled by default. Enable this feature by selecting the "Yes" value on this window, then click on save:



The screenshot shows a dialog box titled "TSplus - Edit Setting". The main heading is "Disable the daughter process handler". Below this, there is a "Description:" label followed by a text area containing the text: "Skip daughter process search when launching applications. It will cause premature logoff if a published application uses daughter process." Below the text area is a "Value:" label followed by a dropdown menu currently set to "No". At the bottom of the dialog, there are two buttons: "Save" and "Cancel".

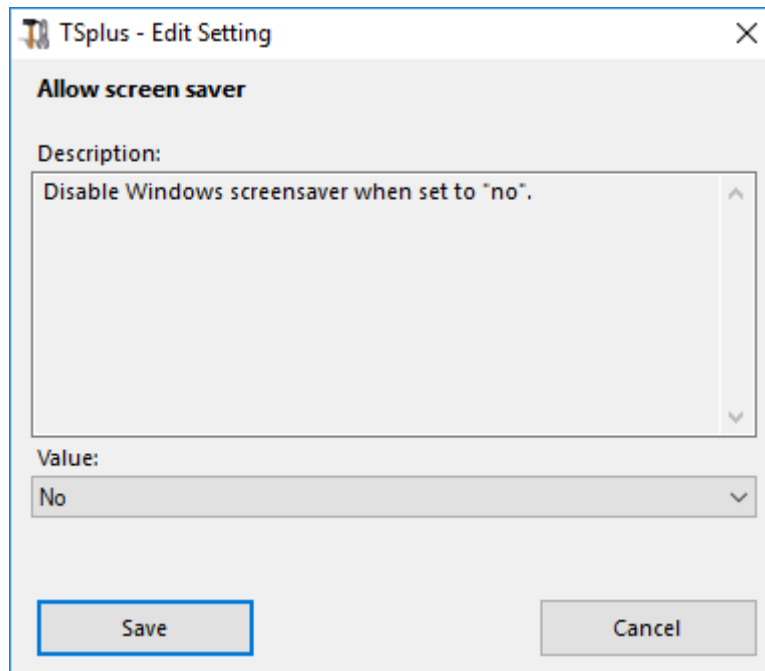
Force logoff if no assigned application

The user will be automatically logoff if he has no application assigned to him. This feature is disabled by default. Enable this feature by selecting the "Yes" value on this window, then click on save:



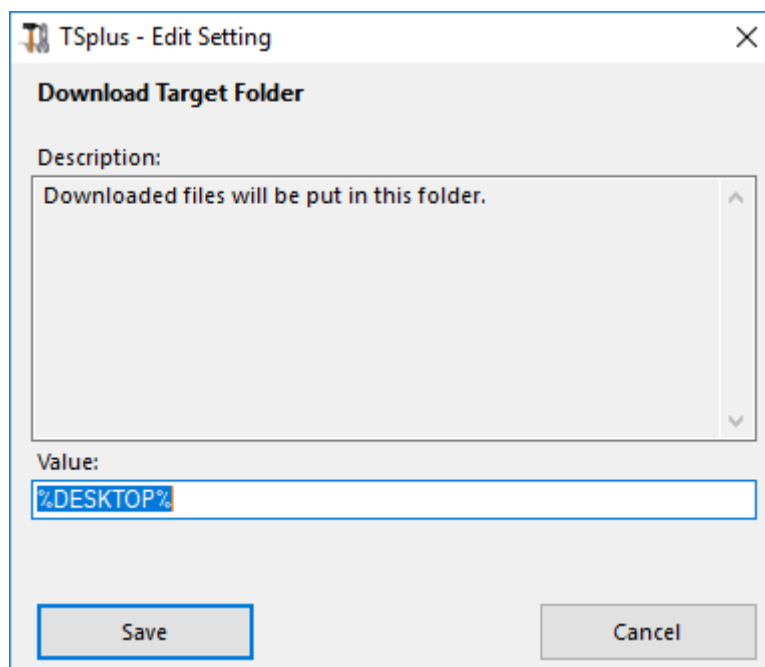
Allow screen saver

This feature is disabled by default. Enable Windows screensaver by selecting the "Yes" value on this window, then click on save:



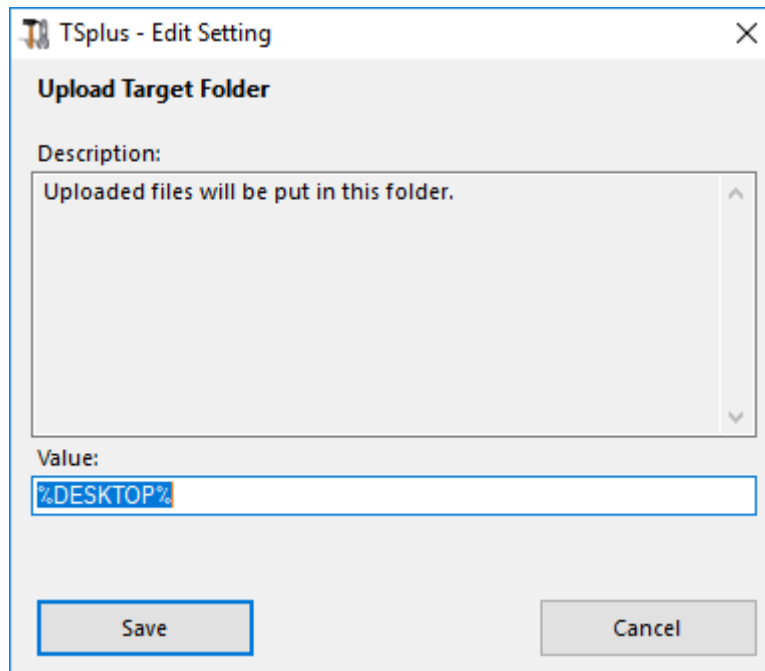
Download target folder

Downloaded files will be put on the Desktop by default. If you wish to modify it, enter the desired download folder's path, then click on save:



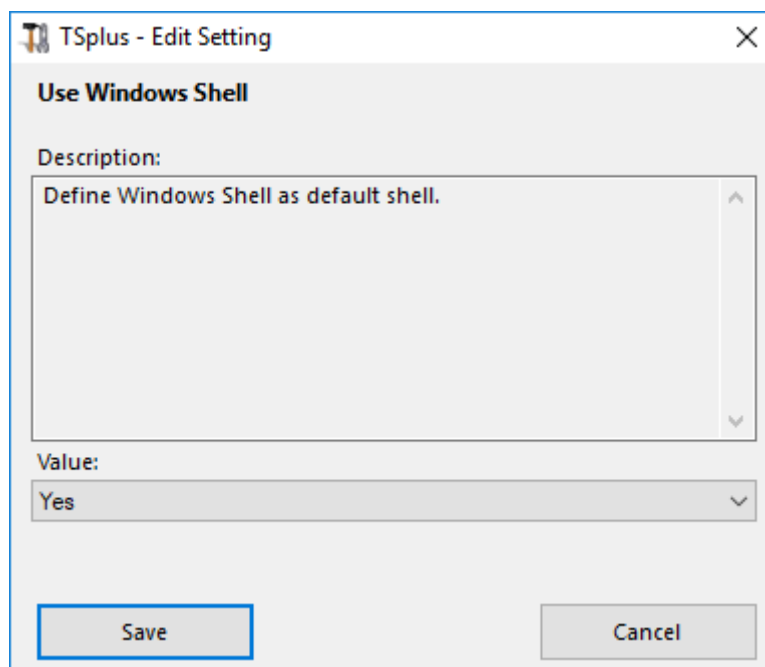
Upload target folder

Uploaded files will be put in this folder. If you wish to modify it, enter the desired upload folder's path, then click on save:



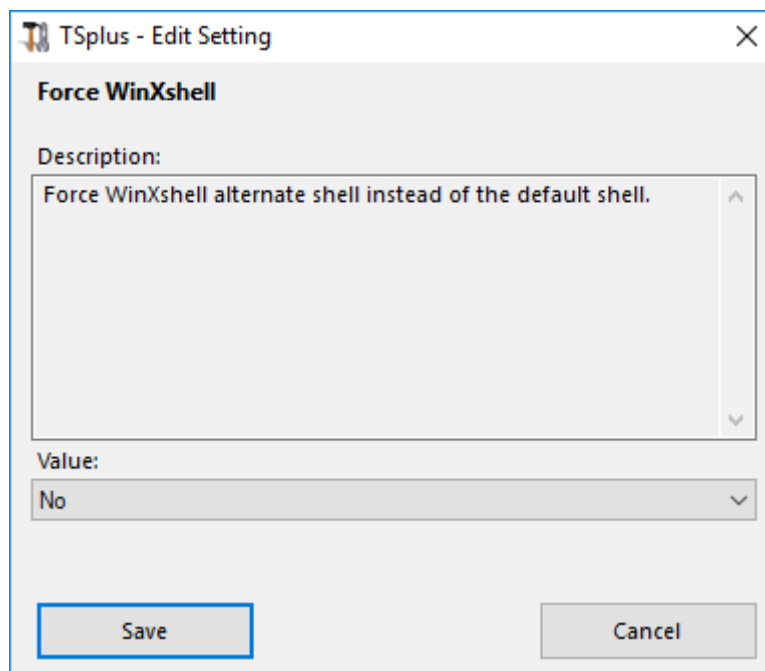
Use Windows Shell

Define Windows Shell as default shell. This feature is enabled by default. If you wish to disable it, select the "No" value on this window, then click on save:



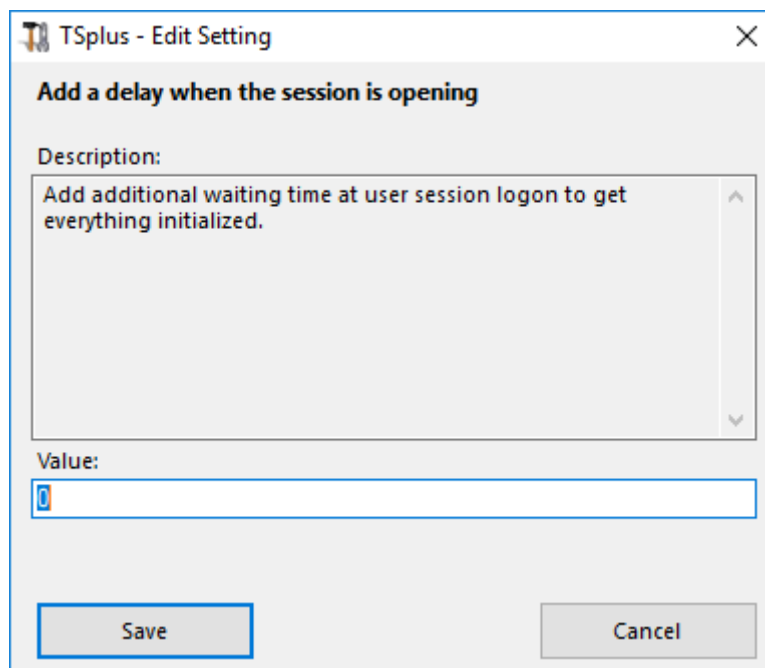
Force WinXshell

This feature is disabled by default. Force WinXshell alternate shell instead of the default shell by selecting the "Yes" value on this window, then click on save:



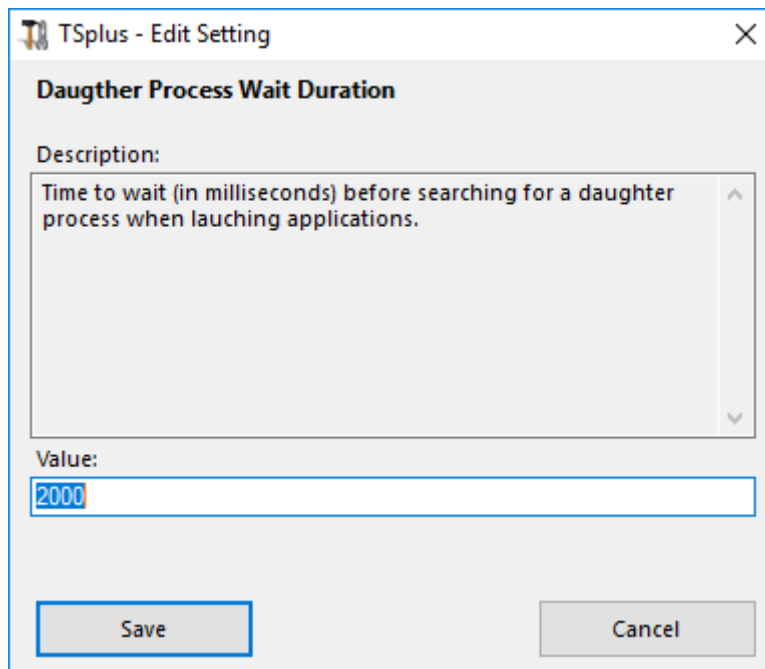
Add a delay when the session is opening

Add additional waiting time at user session logon to get everything initialized. Default value is 0. If you wish to modify it, enter the desired value (in seconds), then click on save:



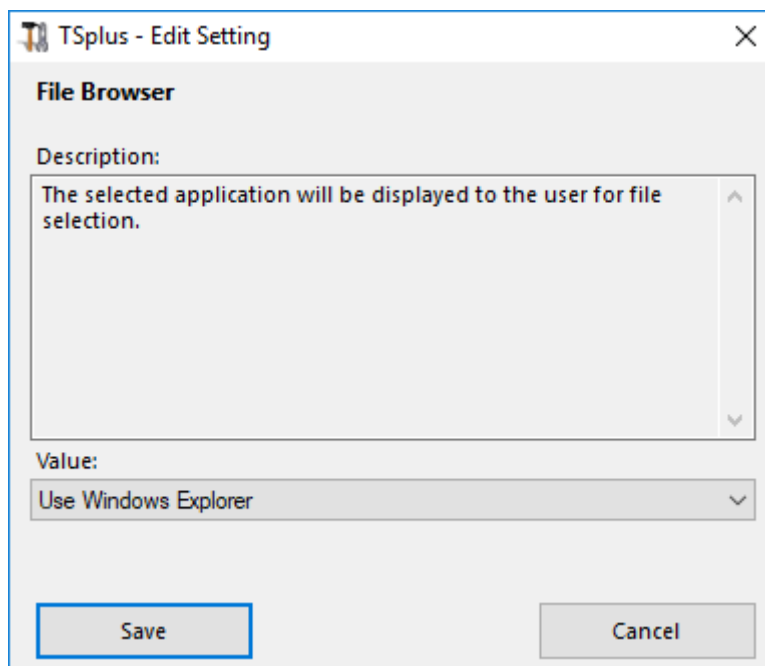
Daughter process wait duration

Time to wait (in milliseconds) before searching for a daughter process when launching applications.



File browser

The selected application will be displayed to the user for file selection. Default browser is Windows Explorer. You can use the TSplus file browser by selecting it, then click on save:



Use WinXshell when required

Authorize system to use WinXshell alternate shell instead of the default shell when recommended. This feature is enabled by default. If you wish to disable it, select the "No" value on this window, then click on save:

