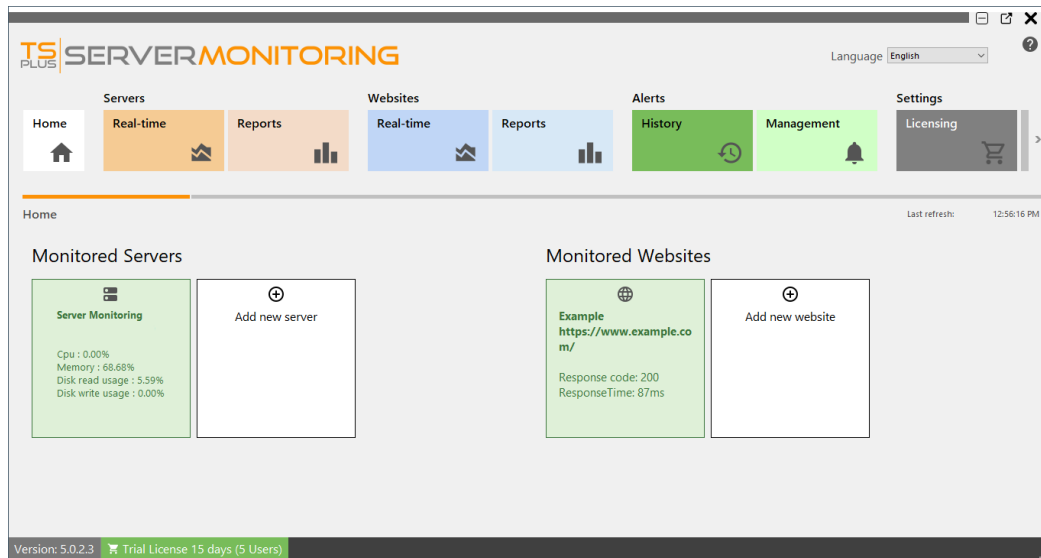


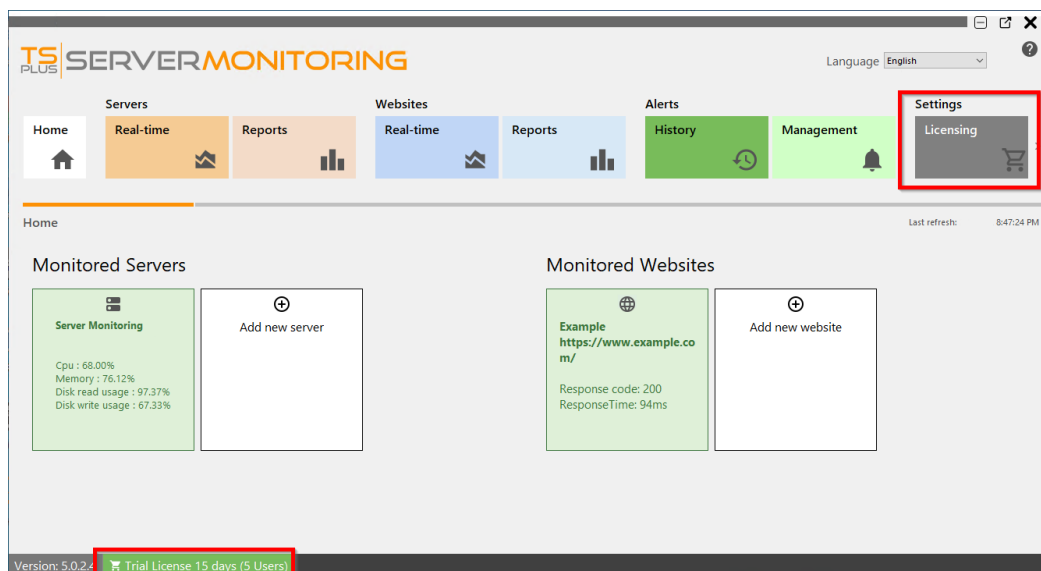
Activating your license

Server Monitoring includes a License Administration Dashboard.

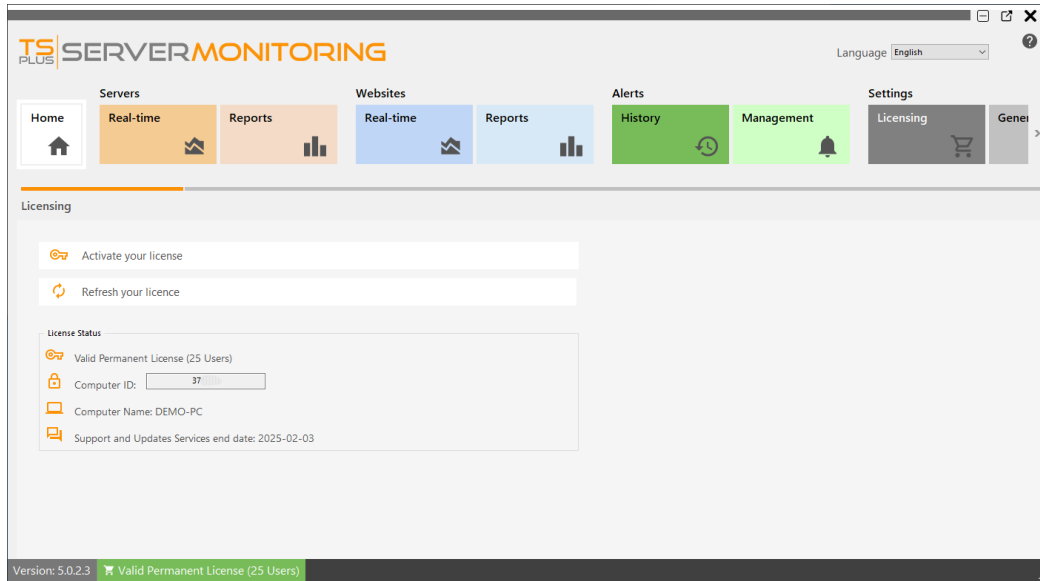
On the Home screen, you can see the status of your License in the status bar at the bottom. For example, a trial License as seen below:



To see your License status and information, with your Computer ID and Computer Name, please click on the License button, or the license status in the status bar :



This screen shows you details about your license and offers you options for activation and updates:



Click on the "Activate License" button then click on the "Administration" > "License" menu.

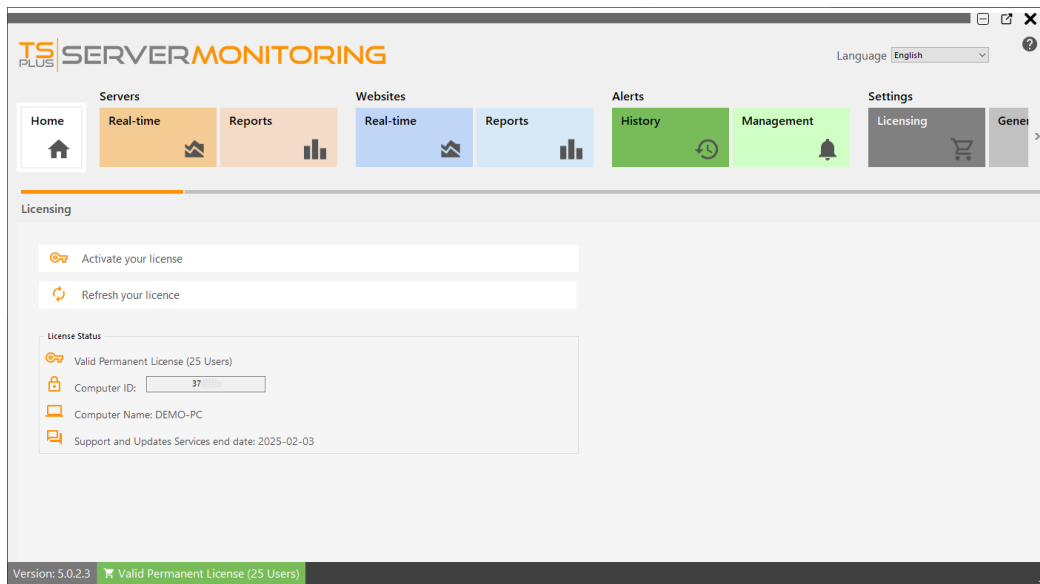
In order to get your Activation Key, connect to our [Licensing Portal](#), enter your Email Address and your Order Number:

[Download the Customer Portal User Guide](#) for more information about how to use it.

You will be able to see and copy your activation key. Click on the "Activate your License" button and enter it:

The screenshot shows a 'License Activation' dialog box. It contains a text input field for the 'Activation Key'. Below the input field, there is a message: 'You will find your Activation Key in our order confirmation email. Please contact Support should you require any help activating your license.' A 'Next >' button is located at the bottom right of the dialog.

You can see the new status of your License by going back to your license details:



Refresh your License Data by clicking on 'Refresh your license' - this will synchronize information with our Licensing Portal.

Thank you for choosing Server Monitoring!

Export logs for support:

Export logs for help from support.

1. Enable troubleshooting
2. Reproduce the problem
3. Export logs for help

