

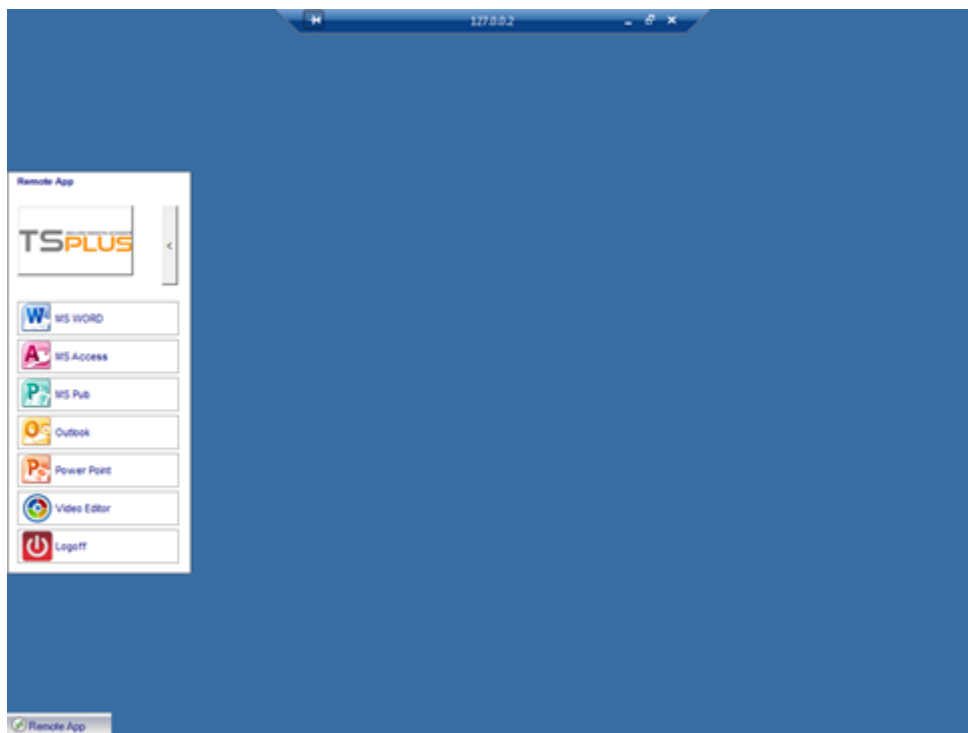
RemoteApp On Client Feature

In the past the generated TSplus Portable client was the usual method for a user to start applications. The 10.50 release introduces **an icon in the notification area** which gives to each user the list of all of his Remote Applications. Within this application list, the user can select the one he wants to start.

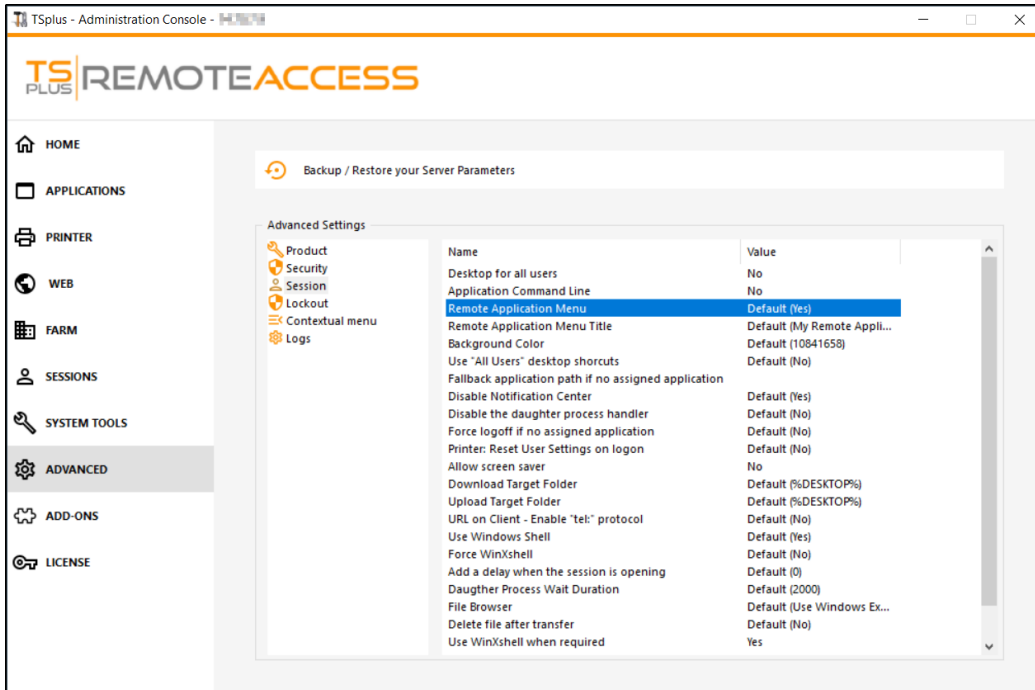
This is a new way for administrators to deliver remote applications (referred to as “RemoteApps“) to their users. Specifically, RemoteApp On Client enables a straightforward publishing process that allows applications installed directly on the server to be provided to users, allows RemoteApp programs to run side-by-side with local programs, and offers integration with a custom “launcher” application to make it simple for users to find and launch RemoteApp programs.

The user Application list will also appear in the **Start menu** under **All Programs** in a folder called **My Remote Applications**. To deploy this new amazing TSplus capability is simple: The Administrator have generated new connection clients and allowed it with the AdminTool. This guide will explain step by step what will happen when the administrator will enable this new feature and will deliver to his users a new generated connection client.

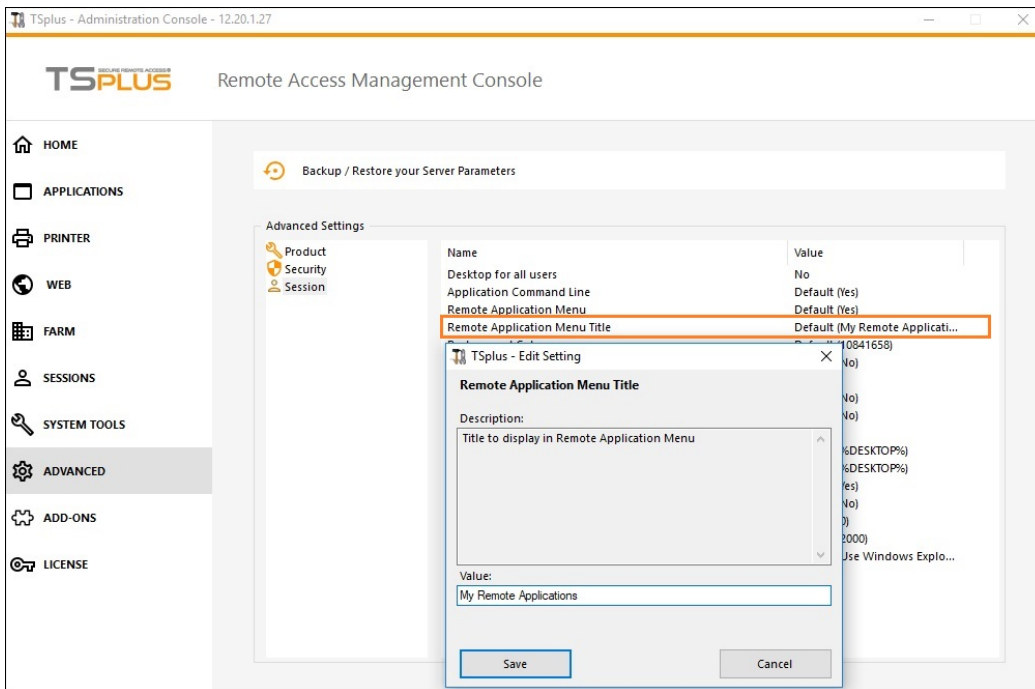
Example: The user "Laura" is using TSplus to access her remote application. To do so, she is using a generated client named **LauraPortableClient.exe**. When she runs it on her PC she gets the following result:



However, the administrator did provide her a new one, created with the TSplus 10.50 release. She will have to run it at least once to benefit from the new **RemoteApp On Client feature**. When the administrator is adding/removing application to a user, such change will be set on the server side at the next logon. It means that the current session will not reflect such modification. The Advanced tab of the AdminTool has an option to enable or to disable this RemoteApp On Client feature, by default, it is enabled:

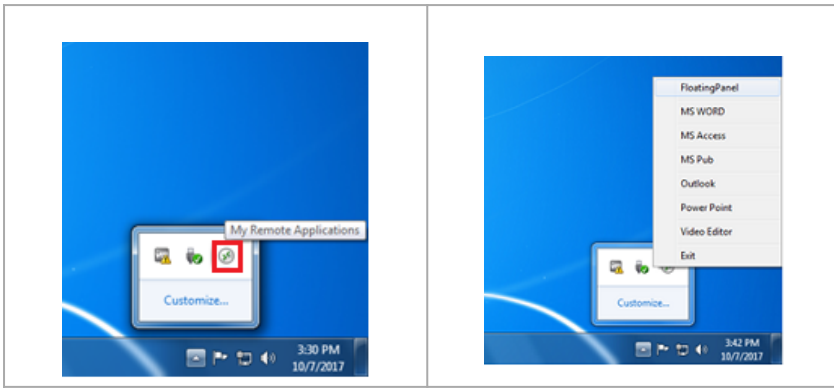


You can change the menu name as you wish, by clicking on the Remote Application Menu Title below, and adding it on the value box:

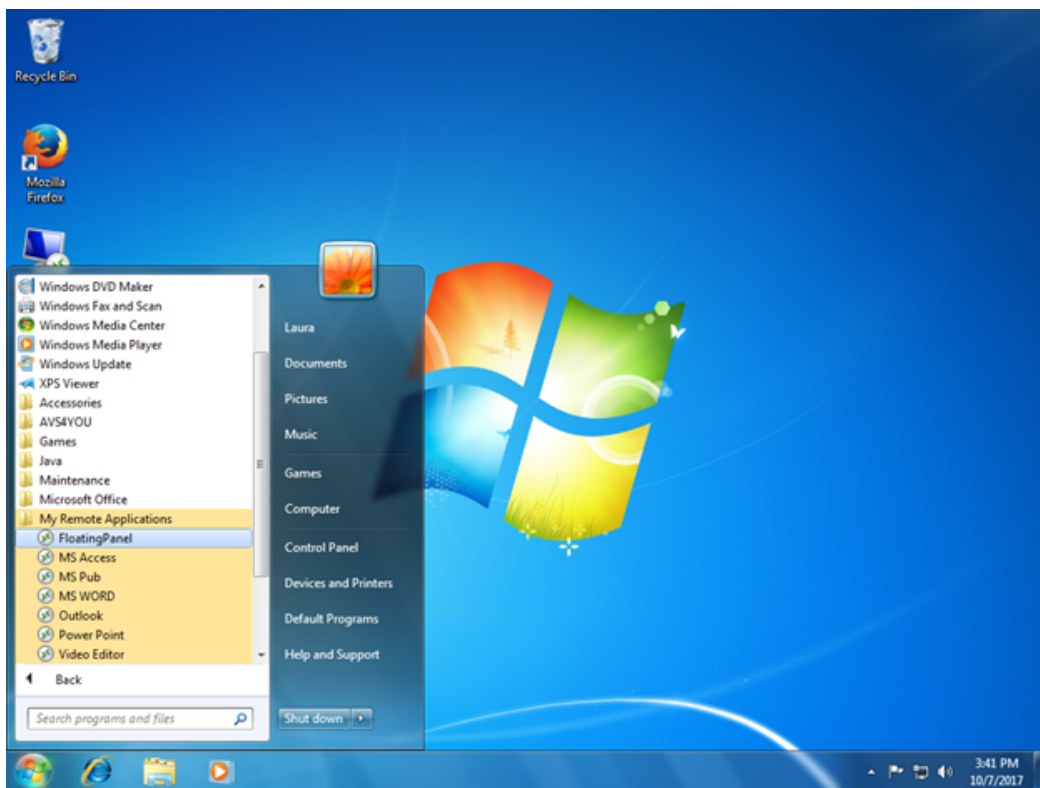


What will happen on her PC when she will run once her new generated client: She will see a new icon in the Notification Area of her local task bar.

| | |
|--|------------------------------|
| My Remote Applications new icon | Application list menu |
| | |

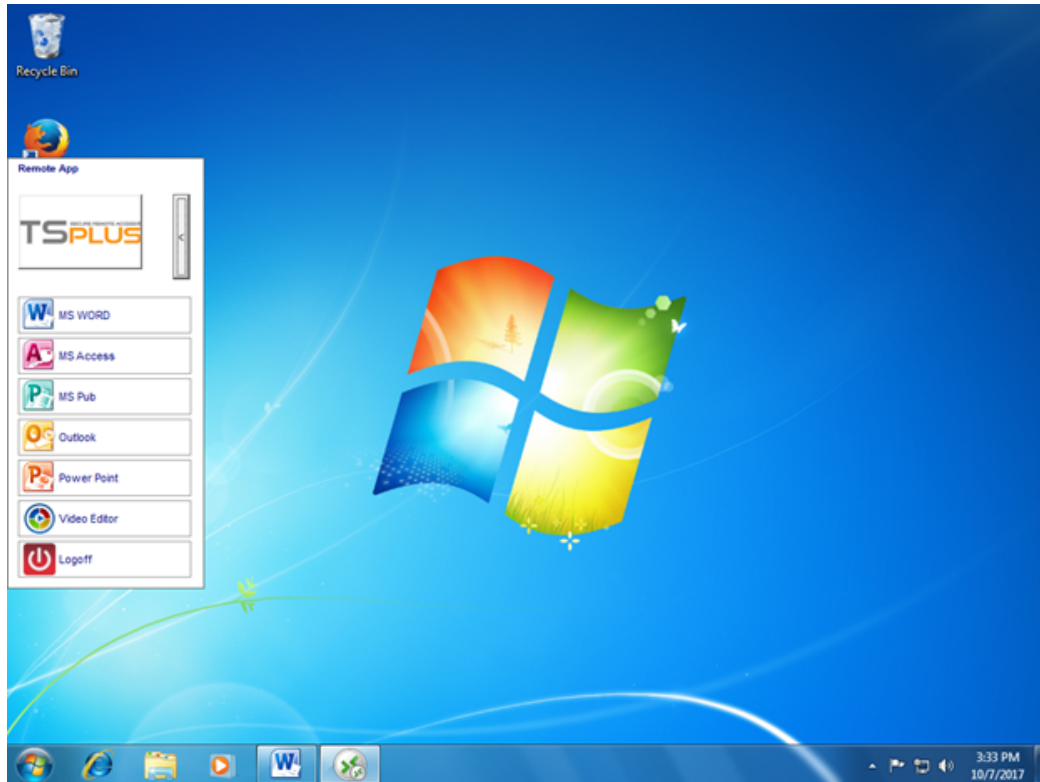


She will also see a new entry within her Start menu Program list named **"My Remote Applications"**:



She will now be able to select one of these listed applications and to start it as a RemoteApp. She will not need to use the provided LauraPortableClient.exe generated client.

For example, if she selects the Floating Panel, she will get this result:

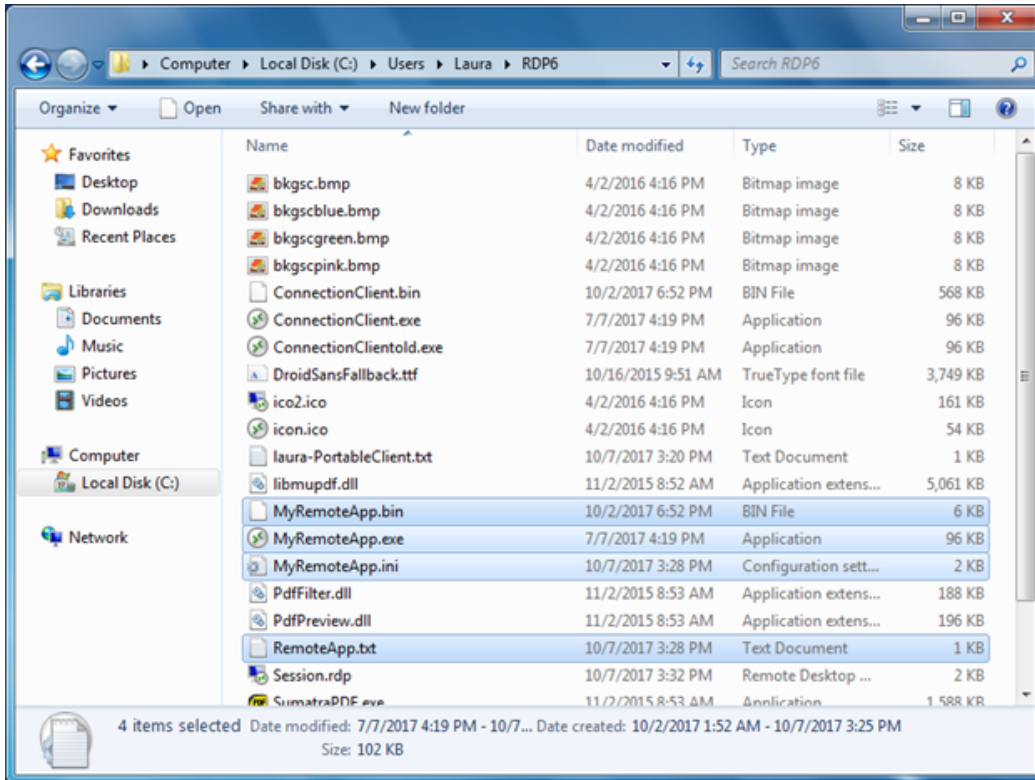


Technical background behind this new technology.

The new generated client of the 10.50 release is adding several files within `C:\Users\%UserName%\RDP6` folder of the local PC's user profile.

MyRemoteApp.exe and *MyRemoteApp.bin* are the program codes which are started to create the new icon in the notification area and the new entry in the All Programs list of the Start button.

MyRemoteApp.ini is a file received from the server. It is providing the details of each application which are assigned to this user on the server side. It is updated at each new connection to the server. Usually, it takes 30 seconds after each logon to receive this file from the server. *RemoteApp.txt* is providing the name of the last generated client started on this PC.



Comments:

If the user has administrator right on his own PC, **MyRemoteApp.exe** will be started automatically at each reboot and the Start button will be updated too. Else, the administrator must run once the new generated client "As Administrator" to enable the new feature. Doing so he will create the proper registry entries in HKLM. If a user is connecting to only one server, this new system is perfect. However, if he is using several connection clients to open sessions on different servers you should keep in mind that the file **MyRemoteApp.ini** will be updated with the values of the last connection. It can be confusing for the user and in such deployment case we recommend no to use this new feature.