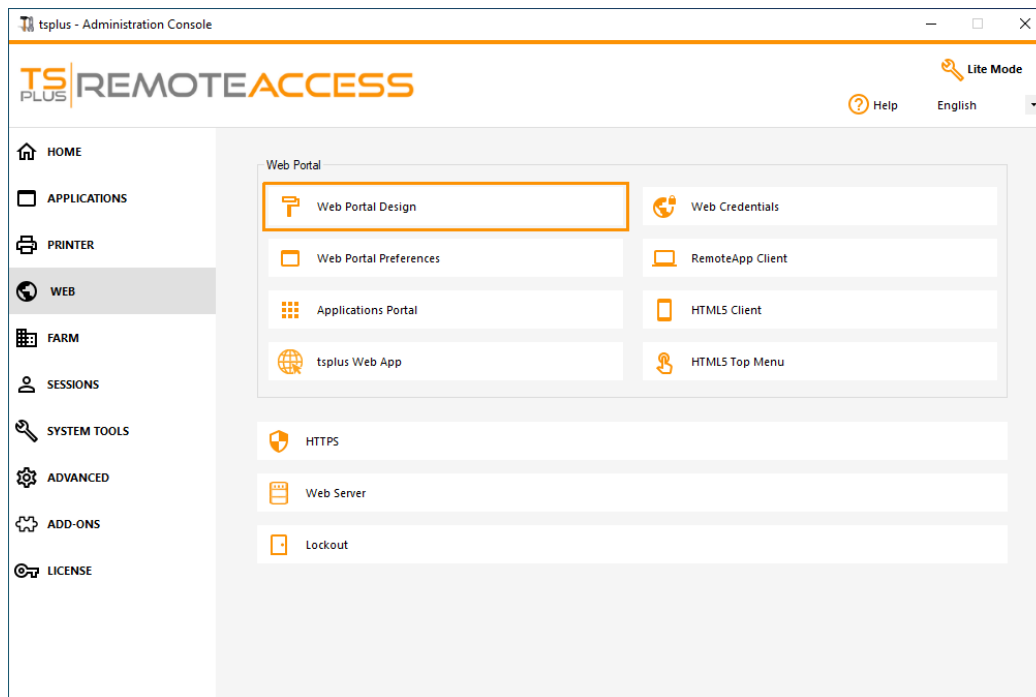


# Creating and Customizing HTML Web Access pages using the Web Portal Preferences and the Web Portal Design

Using the Web Portal Design and the Web portal Preferences, you will be able to create your own customized HTML Web Access pages - and there is *no need to be a web developer*!

## Web Portal Design



With the Web Portal Design tab, you will be able to customize all the display and graphic settings, as well as add your own logo. You have the choice between a collection of 20 photos, or you can add your own. You can also set any color theme with the background color of your choice or you can use one of the classic themes.

**Look & Feel**

Page Theme: Photo

Photo: Coffee Choose...

Title: Web Access

Login Display Text: Log on

Background color: #5D4E3A Choose...

Text color: #FFFFFF Choose...

Font: Verdana

Field Labels

Username: User name:

Password: Password:

Domain: Domain:

2-Step Verification: 2-step verification:

Log-on Button: Log on

Header Baseline: xple and Systems Through Internet Size: 13

Background color: Choose...

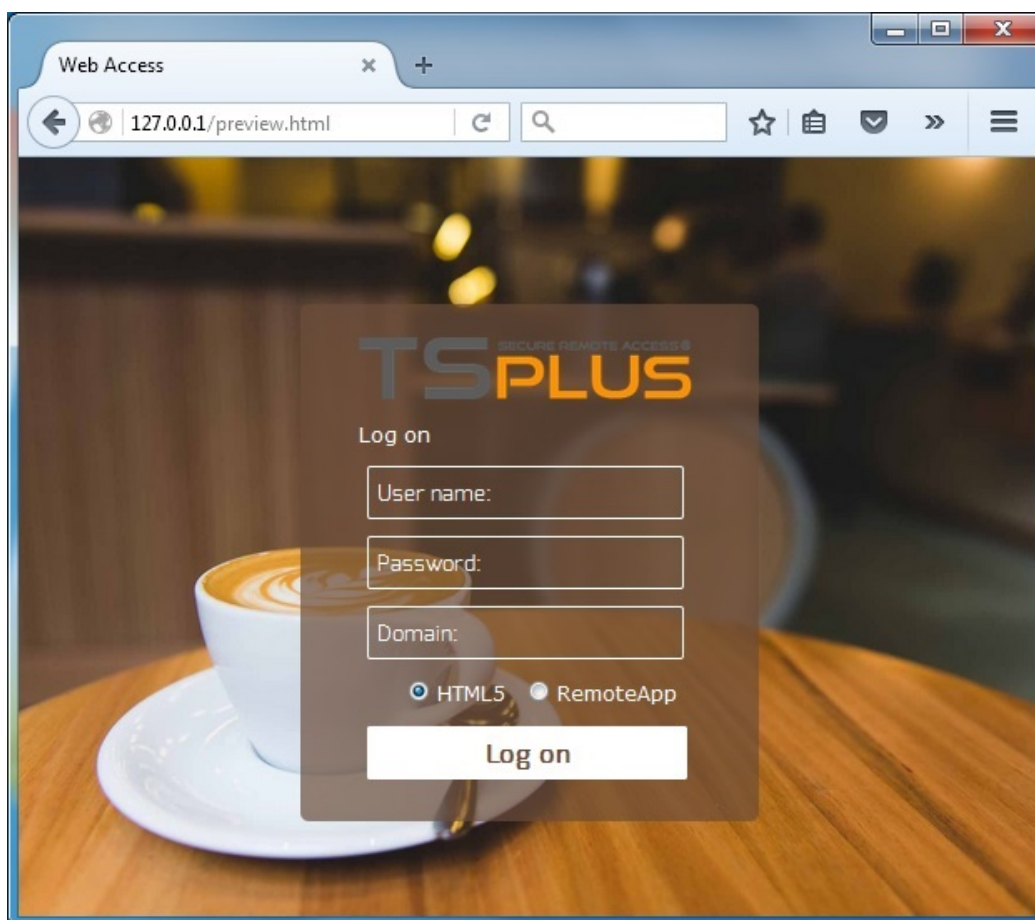
Logo: software\java\img\header\_web.png Browse...

Footer Picture: software\java\img\footer.png Browse...

Help... Reset Preview Save

Some advanced tips:

- You don't have to click on a "Choose..." button if you already know a color code: just type it in the input.
- Be careful with the real size of the pictures: your page could be quite bad-looking if a picture is too big.
- Do not hesitate to use the "Preview" button on the bottom, it's fast and easy!

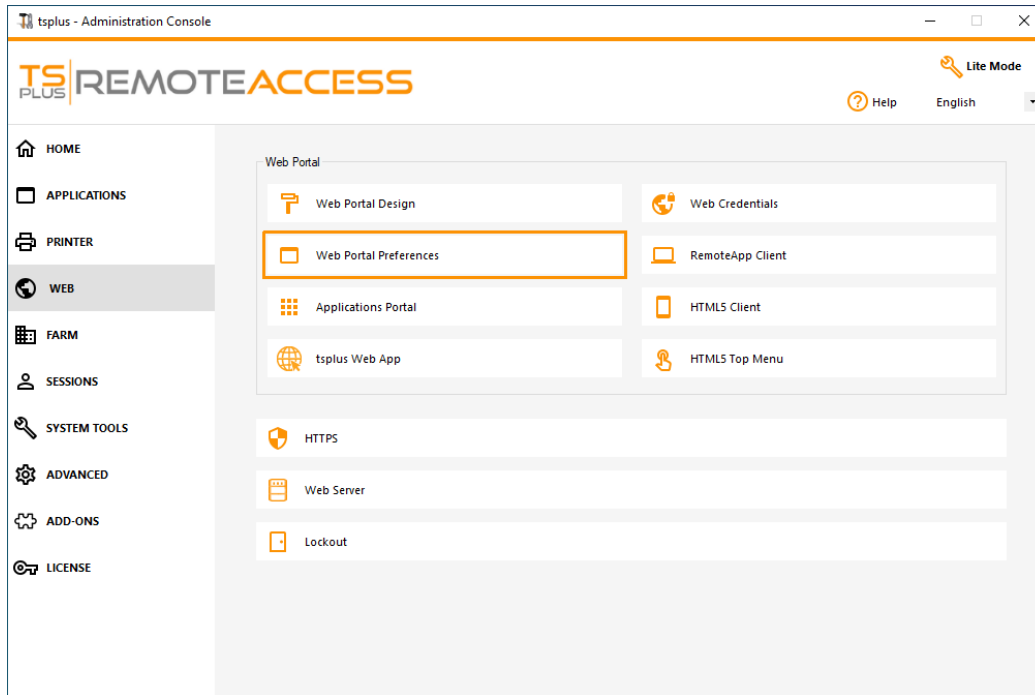


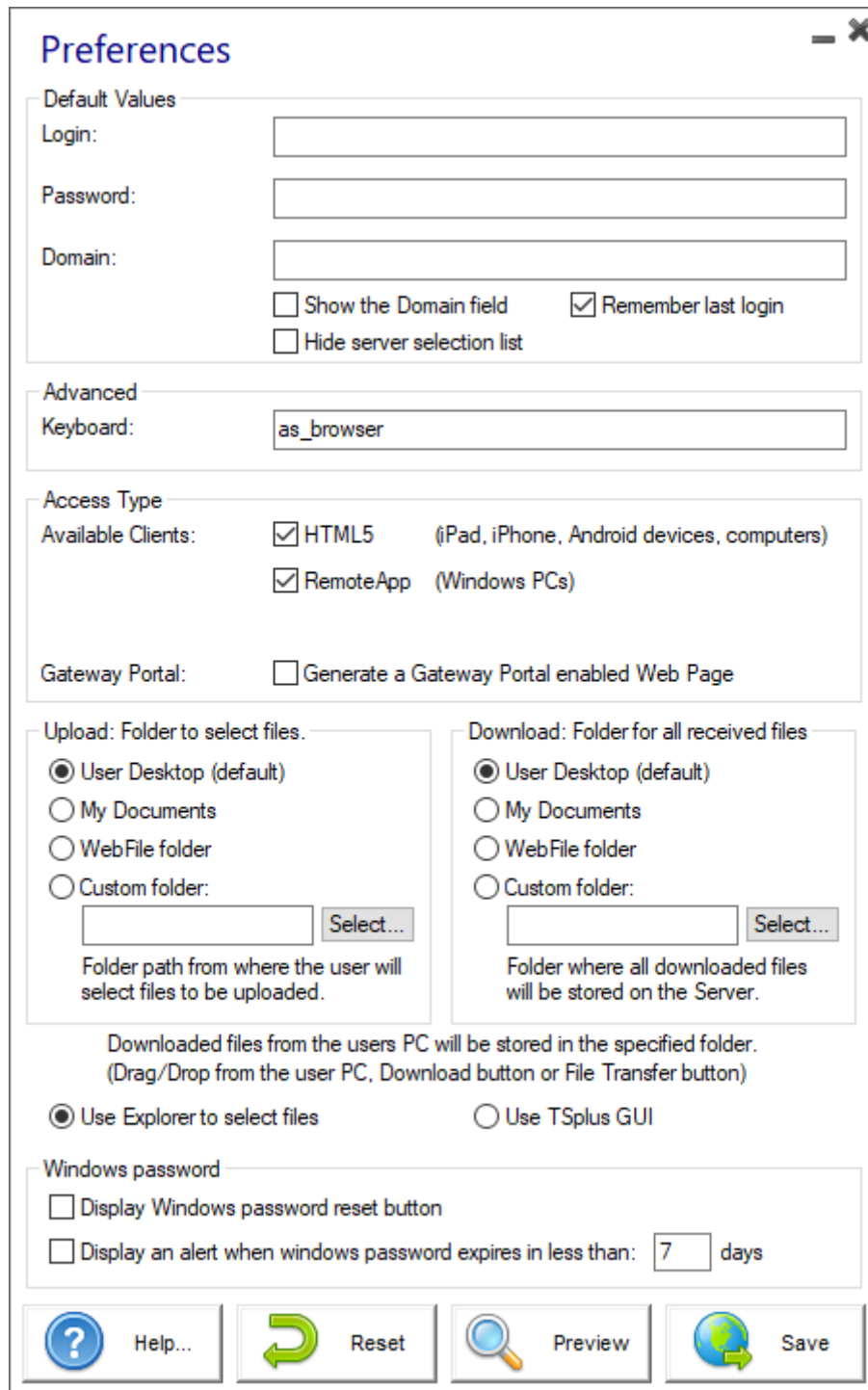
## Saving typed values and Resetting to default ones

When you close this window, all the values you typed and checked are saved.

If you want to reset these values to values by default, click on the "Reset" button on the bottom.

## Web Portal Preferences





**Preferences**

**Default Values**

Login:

Password:

Domain:

☐ Show the Domain field ☒ Remember last login

☐ Hide server selection list

**Advanced**

Keyboard:

**Access Type**

Available Clients: ☒ HTML5 (iPad, iPhone, Android devices, computers)

☒ RemoteApp (Windows PCs)

Gateway Portal: ☐ Generate a Gateway Portal enabled Web Page

**Upload: Folder to select files.**

☒ User Desktop (default)

☐ My Documents

☐ WebFile folder

☐ Custom folder:  

Folder path from where the user will select files to be uploaded.

**Download: Folder for all received files**

☒ User Desktop (default)

☐ My Documents

☐ WebFile folder

☐ Custom folder:  

Folder where all downloaded files will be stored on the Server.

Downloaded files from the users PC will be stored in the specified folder.  
(Drag/Drop from the user PC, Download button or File Transfer button)

☒ Use Explorer to select files ☐ Use TSplus GUI

**Windows password**

☐ Display Windows password reset button

☐ Display an alert when windows password expires in less than:  days

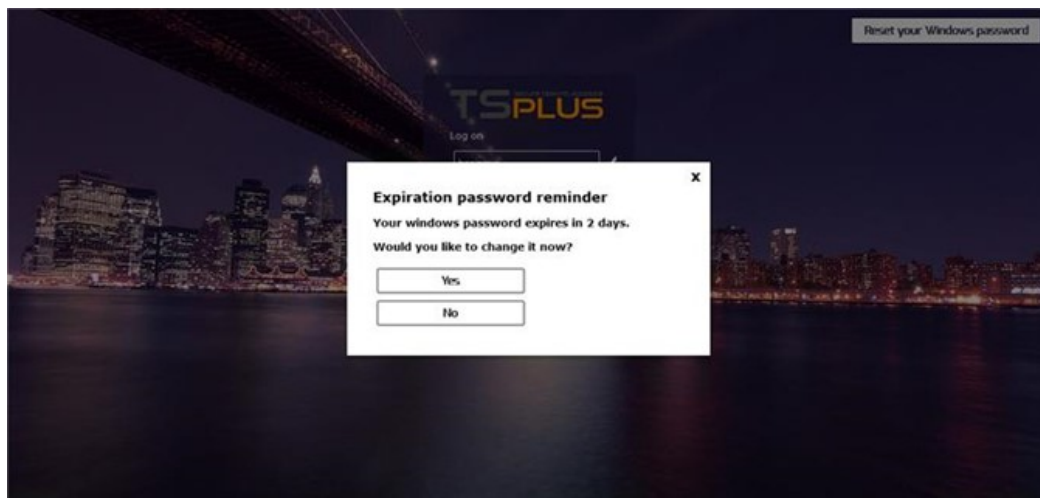
This tile allows you to configure the Web Access page:

- **"Default Values"**: you can specify a default login, password and domain that will auto-populate the login fields. All of the settings present here are saved in the index.html file, which can be copied and renamed to your preference.
- **"Show the Domain Field"**: when checked, the Domain field is included in the login information request.
- **"Keyboard"**: only for advanced administrators who have special keyboard requirements.
- **"Available Clients"**: choose between 2 types of web connection clients. If both are checked, the user will have the choice.
- **"Gateway Portal"**: check it to activate a Gateway Portal enabled page. This feature adds an extra authentication step when you assign a server to a user or group. (More information on the Gateway feature can be found [here](#)).

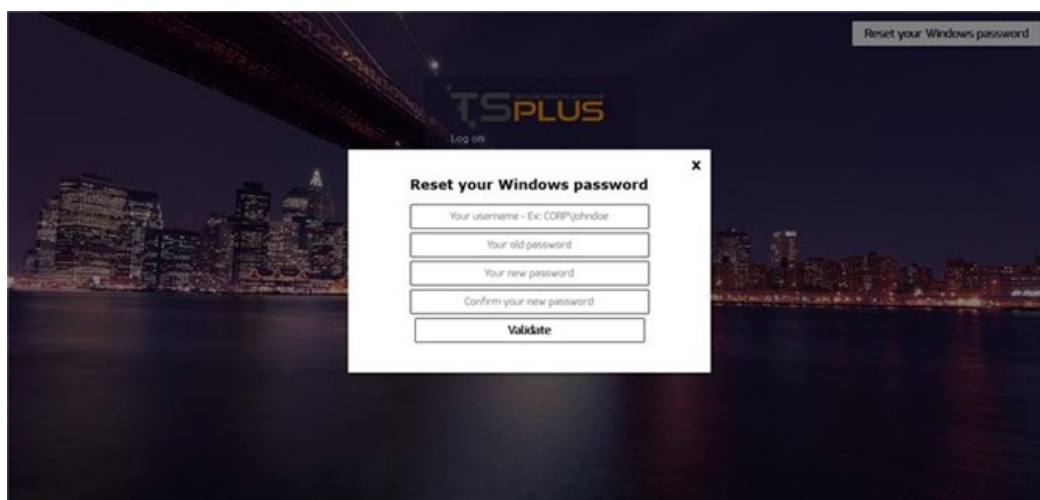
- **"Upload - Download"**: choose source and destination paths for file uploads and downloads.

Since TSplus version 14.60, the section **"Windows Password"** has been added.

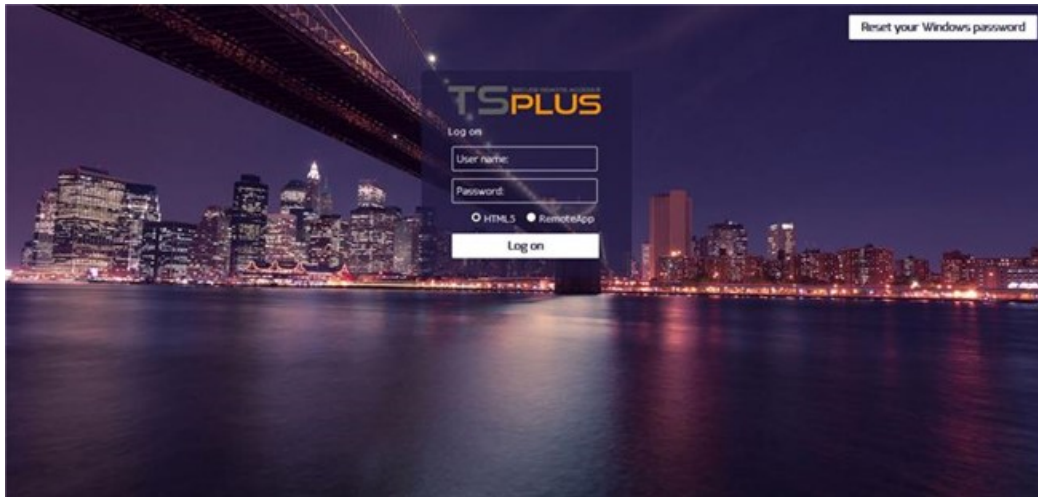
From this section, you can now add an alert message showing during the connection through the web portal, to inform the user about his password expiring date. For example, the following pop-up will show if the user's windows password expires in less than 3 days:



As mentioned it gives him the possibility to change it directly from the Web Portal using the pop-up displayed just below:



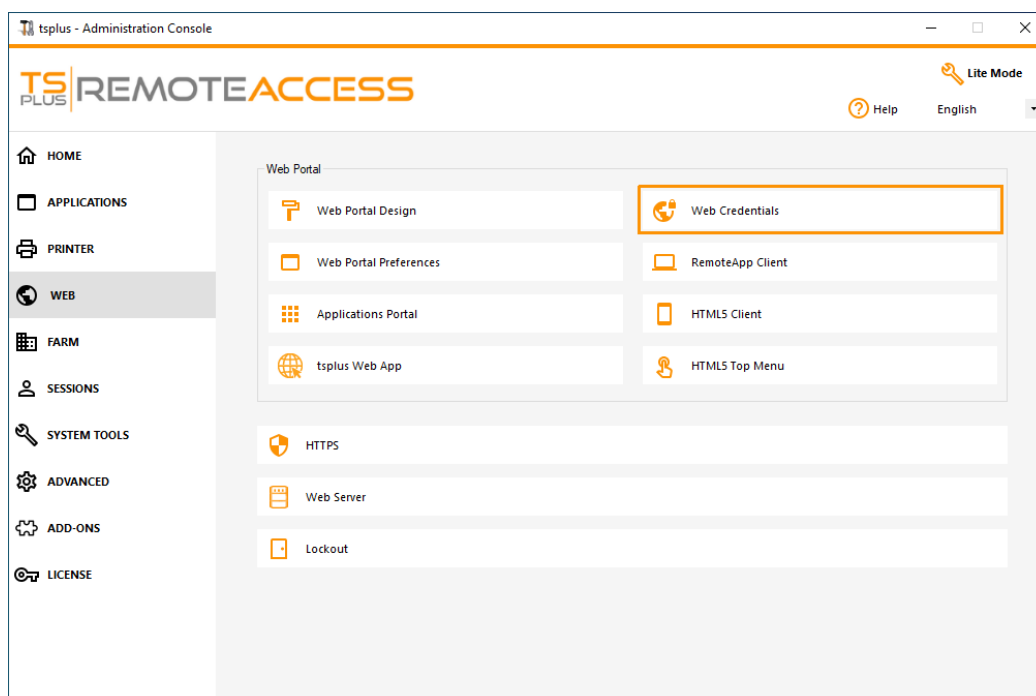
You can also directly make the user able to change his windows at any time, by enabling the button **"Reset your Windows password"** through the Web Portal preferences.



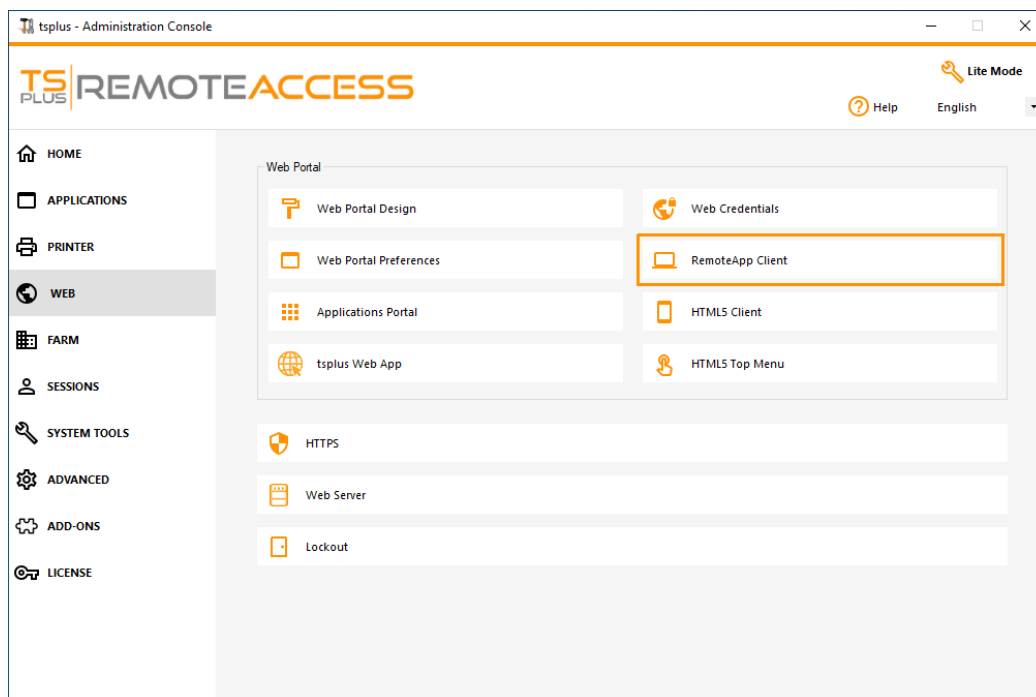
## Web Credentials

The "Web Credentials" section allows you to enable (or disable) the [Web Credentials](#) feature.

When using Web Credentials, you might want to allow empty passwords. If you only have Web Credentials with empty passwords, we recommend that you uncheck the "Show Password Field" option, in order to simplify even more the web login page.

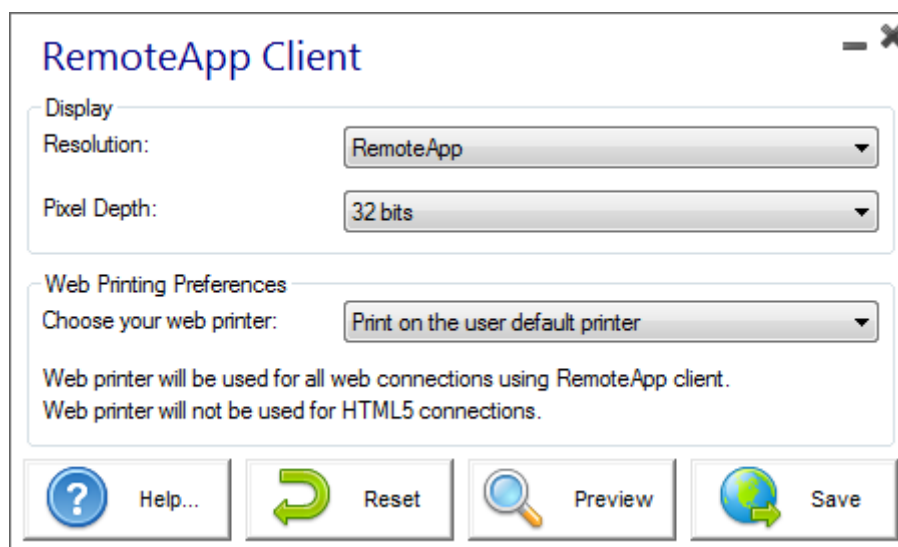


## Remote App tile

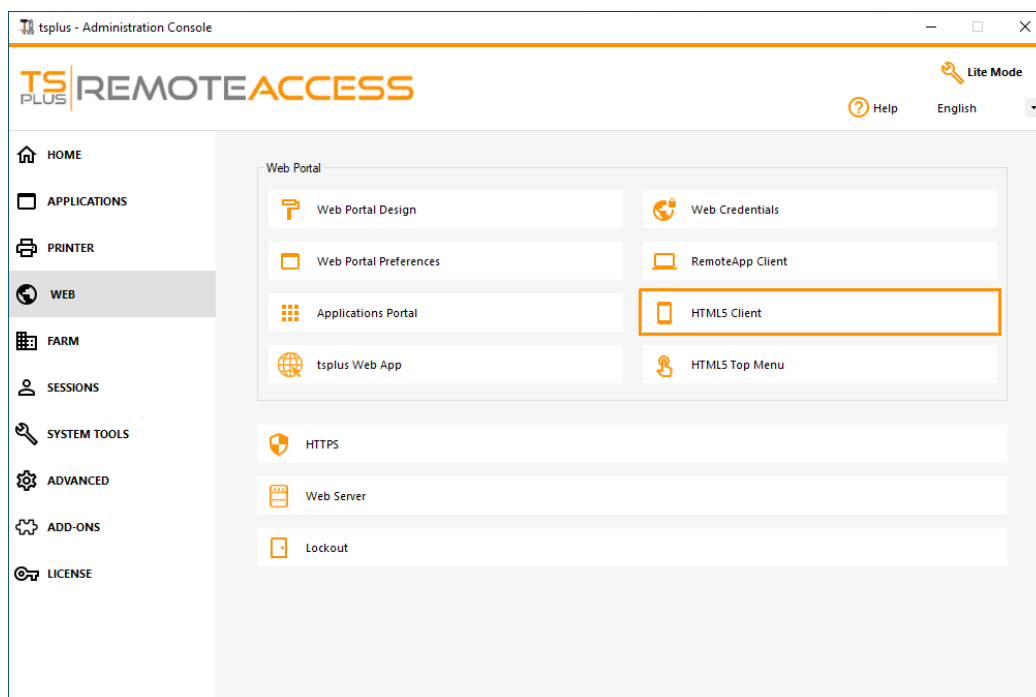


This tile is for Windows clients specific settings.

You can choose your display between RemoteApp (remote connection without the remote desktop) or Standard RDP. You can also decide if you want documents to be printed on the user default printer, display a local preview or the local printer choice.



## HTML5 client tile



On this tile, you can edit the parameters for the HTML5 client web display. More information on [this page](#).



HTML5 Client

Menu bar:

All devices and computers

File Transfer:

☒ Enable File Transfer

Ctrl+Alt+Del:

Mobile devices only

Top menu preference:

Transparency

Default Colors:

16 bits

Connection Timeout:

40

Warning Messages:

☐ Hide Warning Messages

Sounds:

☒ Play Sounds

Theming: ☐

Background Color Preference

10841658

Choose color...

Add a logo to the background:

Browse...

Remove the logo

Lagon screen message:

ABLE BGCOLOR=\#FFFFFF\ BORDER=0 BORDERCOLOR=\#FFFFFF\ CELLP/

Change lagon screen animated GIF:

Browse...

Display time msec.: 5000

Smartphone and tablets Preferences

Use recommended values

Pointer settings

☐ No pointer
☐ Small pointer
☒ Medium pointer
☐ Large pointer

Transparency

95 %

Software keyboard settings

☒ Use soft. keyb.
☐ Automatically show the software keyboard when the focus is in an entry field

Transparency

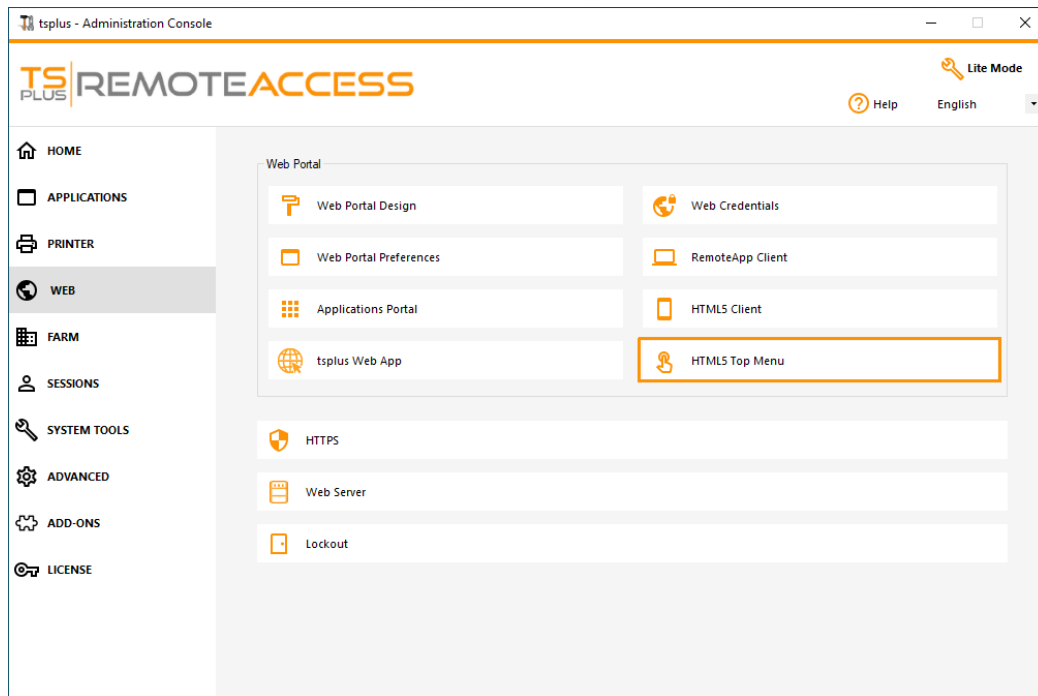
95 %

Help...

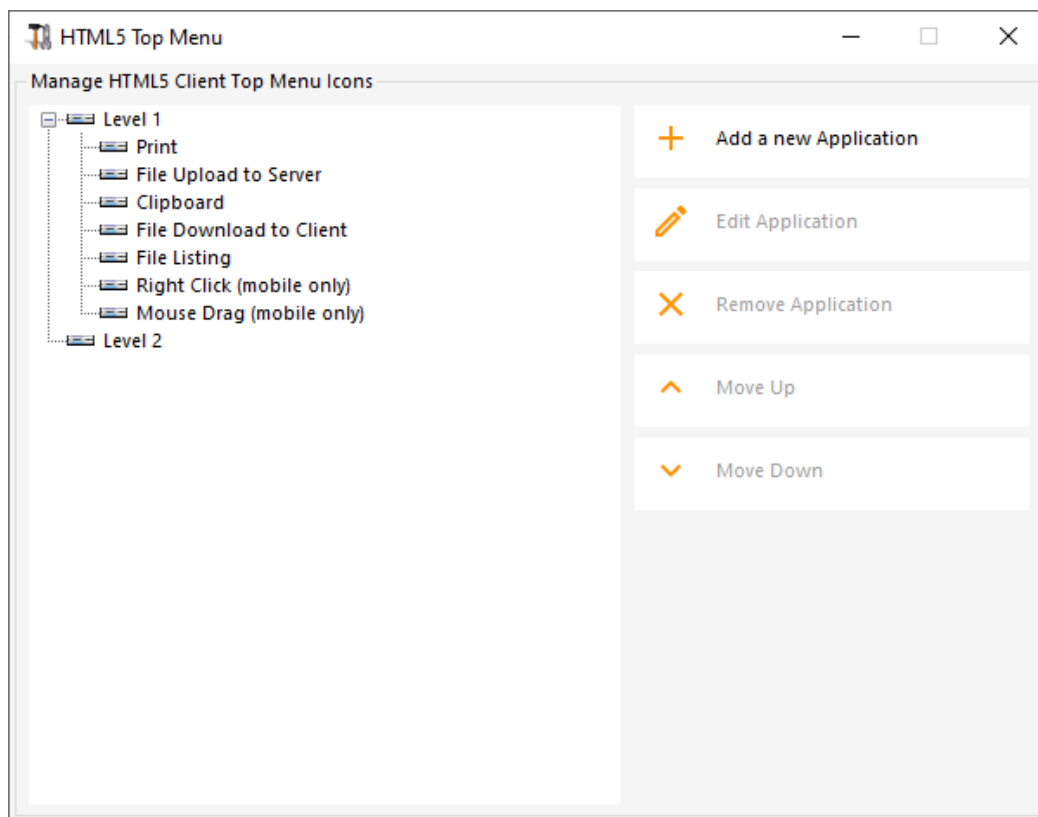
Reset

Save

## HTML5 Top Menu Tile



This tile enables you to choose the applications to display on level 1 or 2 on the Top Menu of your generated remote web session. You can also edit these applications in order for them to appear on a specific client type : pc, mobile, ios... on or all of them.



## Generating the HTML Web Access page

We advise you to try a "Preview" before generating a new HTML Web Access page.

Once you are pleased by the preview, then you can click on the "Publish" button to generate and publish the page to your web server's root folder.

You will be asked for a page name. If you want to overwrite your default page, use "index". In this case, the newly published web page will be accessible at: <http://your-server.com/index.html>