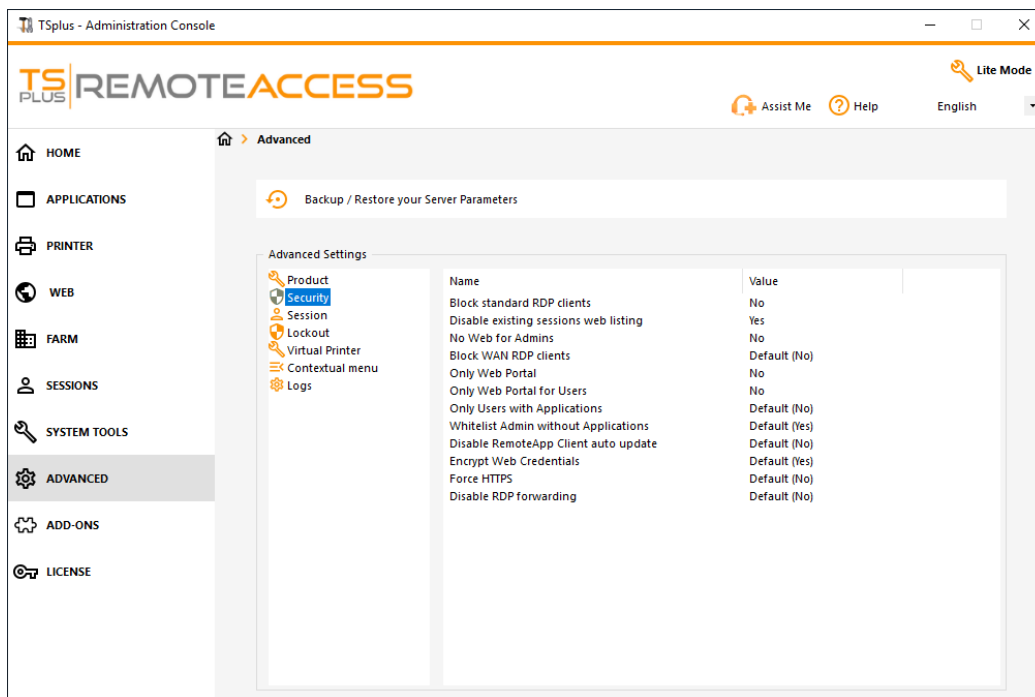


# Advanced Features - Security

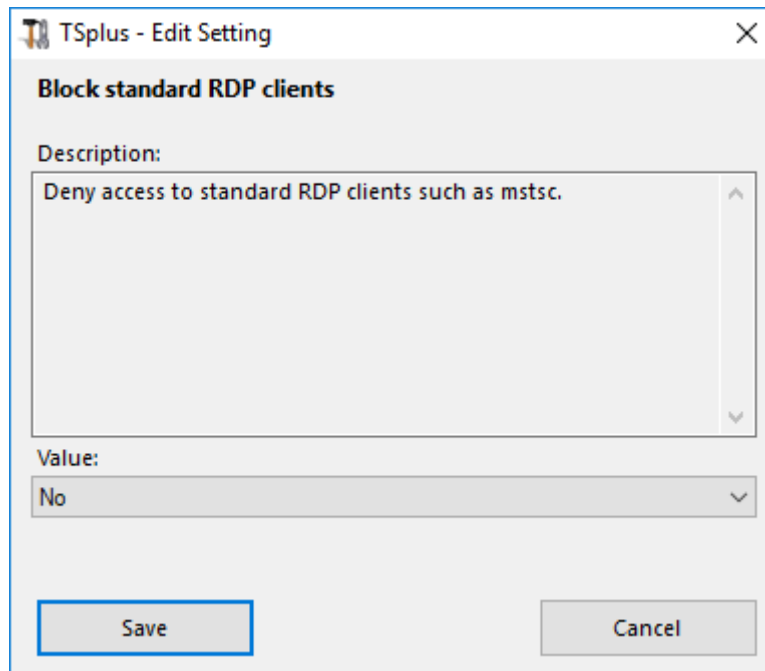
## Overview

On the Security section of the Advanced features, you can block, disable or customize connection types for users.



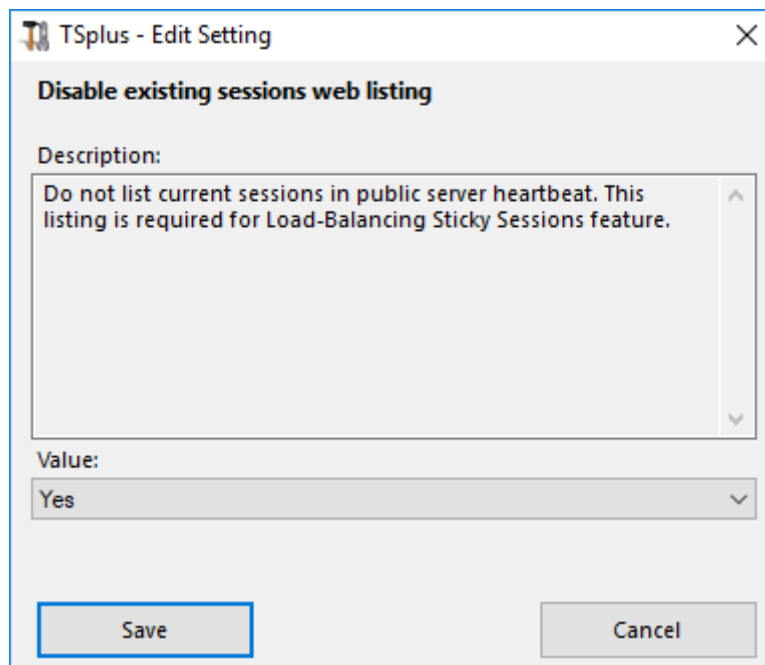
## Block Standard RDP Clients

Select the "Yes" value if you wish to deny access to standard RDP clients such as mstsc to your users.



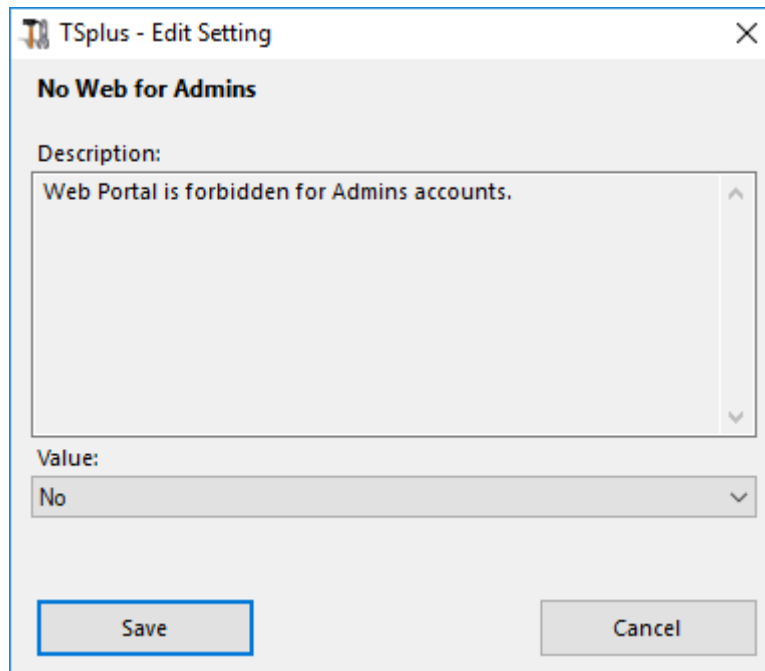
## Disable existing sessions web listing

This listing is required for Load-Balancing Sticky Sessions feature and is enabled by default. If you wish to disable it, select the "No" value on this window, then click on save:



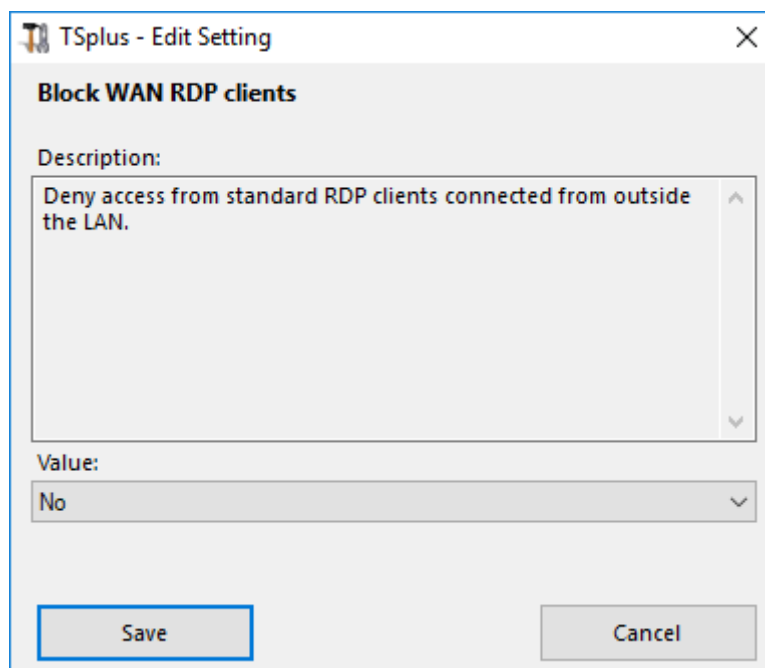
## No Web for Admins

Disable the Web Portal for Administrators by selecting the "Yes" value:



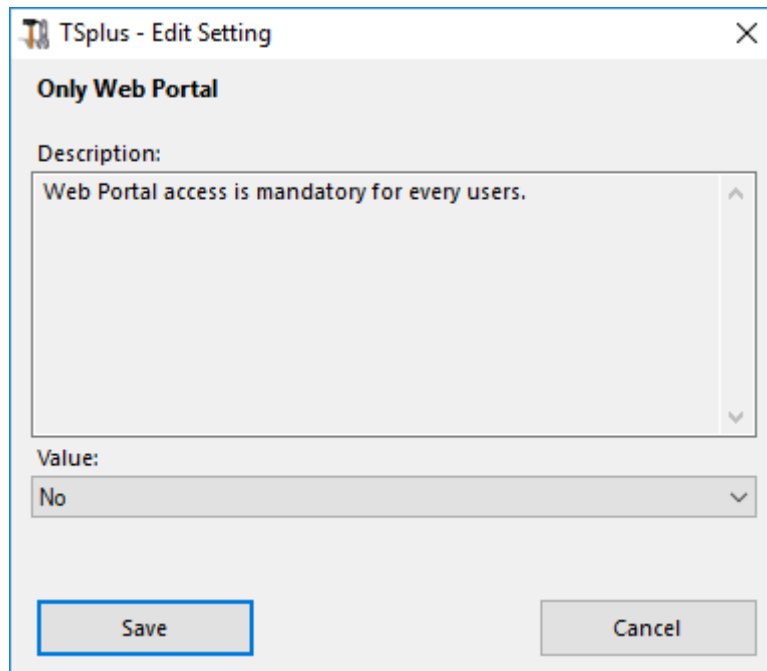
## Block WAN RDP clients

Deny access from standard RDP clients connected from outside the LAN by selecting the "Yes" value.



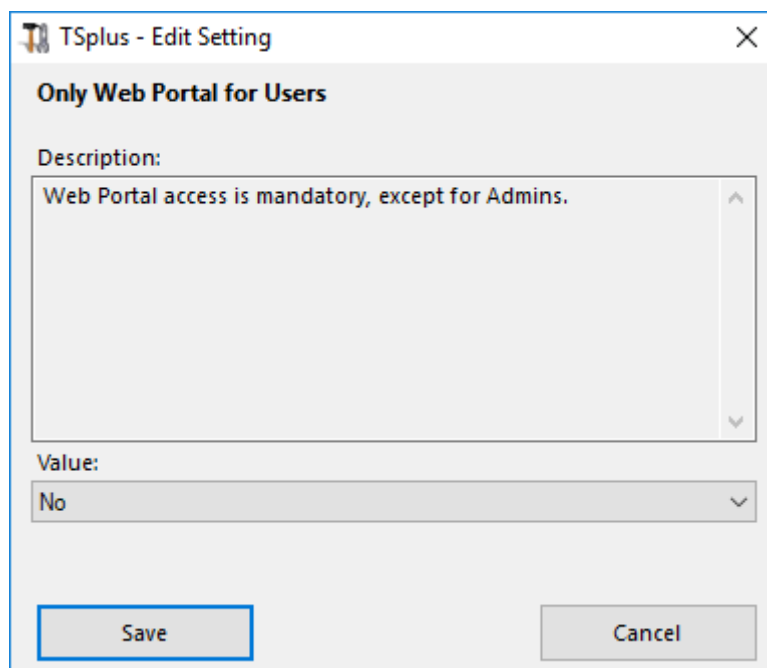
## Only Web Portal

Make Web Portal access mandatory for every user by selecting the "yes" value.



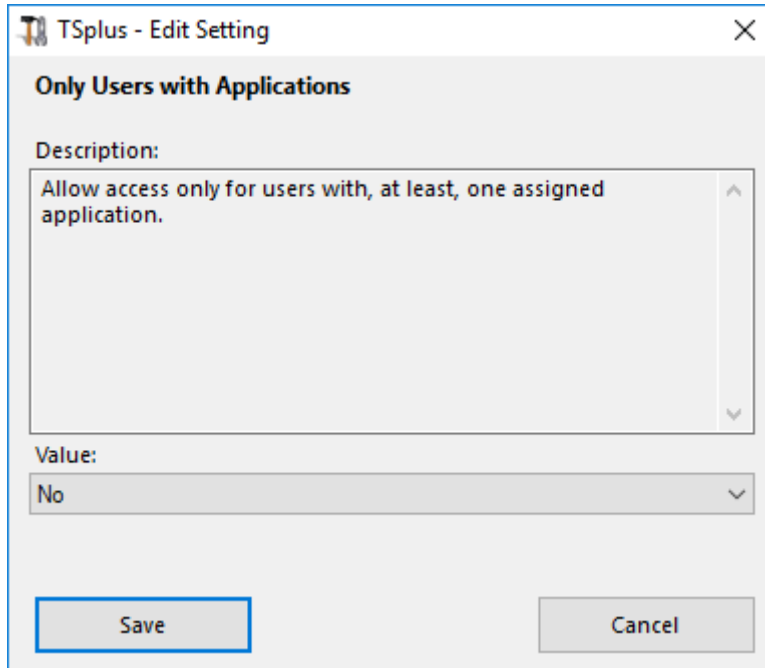
## Only Web Portal for Users

Make Web Portal access mandatory for every user, except the Admins by selecting the "yes" value.



## Only Users with Applications

Allow access only for users with, at least, one assigned application by selecting the "yes" value.



## Whitelist Admins without Applications

Allow access for admins even if they do not have any assigned application and "Only Users with Applications" is enabled. This feature is enabled by default. If you wish to disable it, select the "No" value on this window, then click on save:

